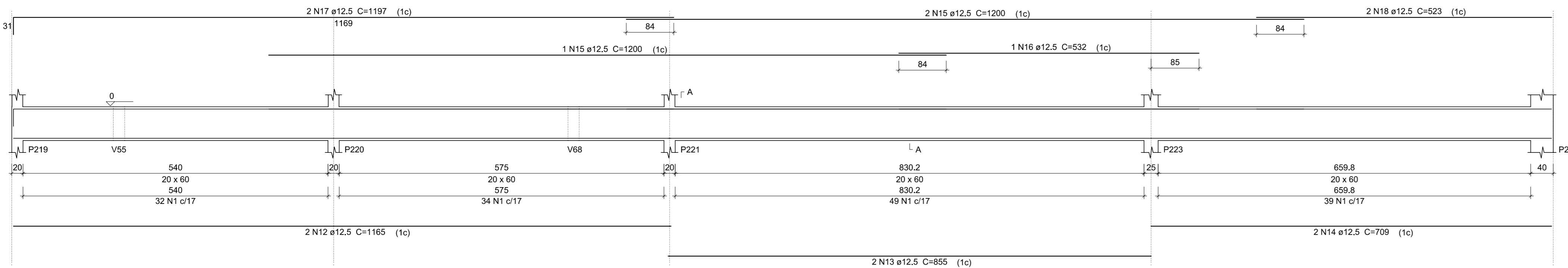
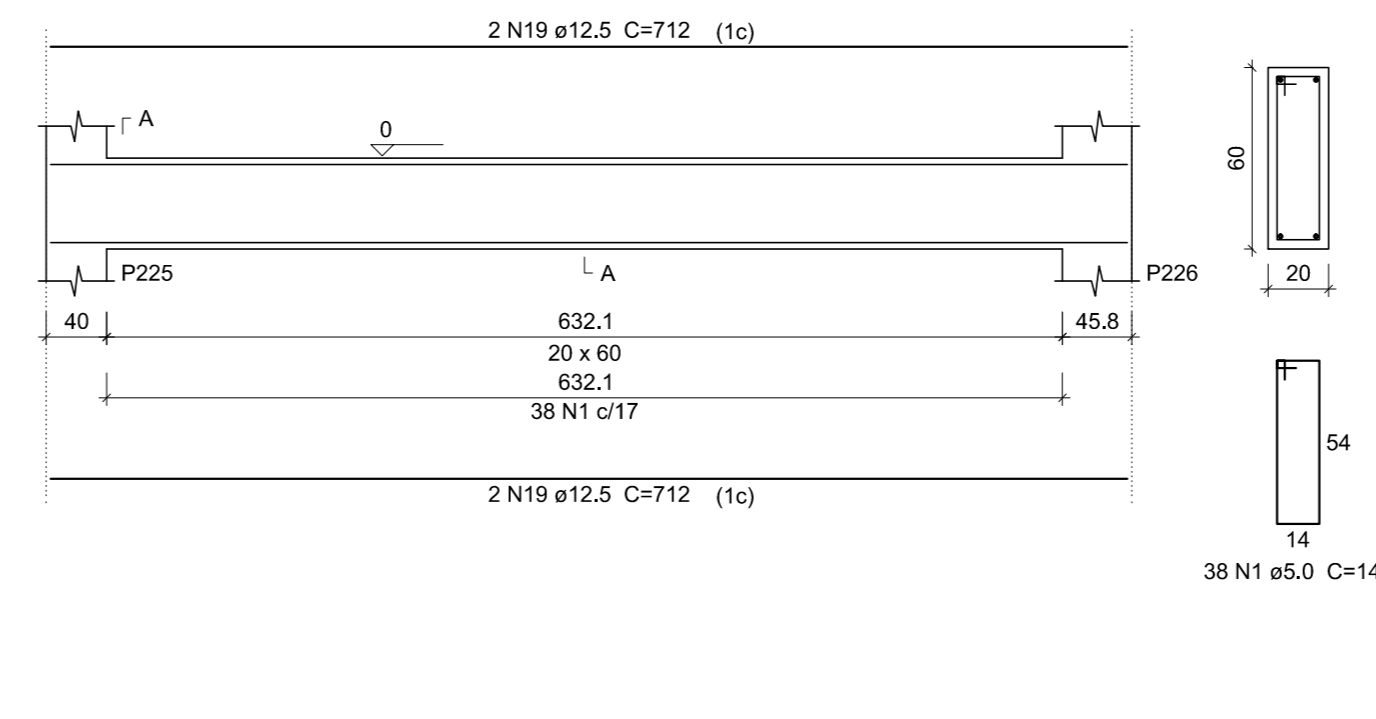


V49
ESC 1:50



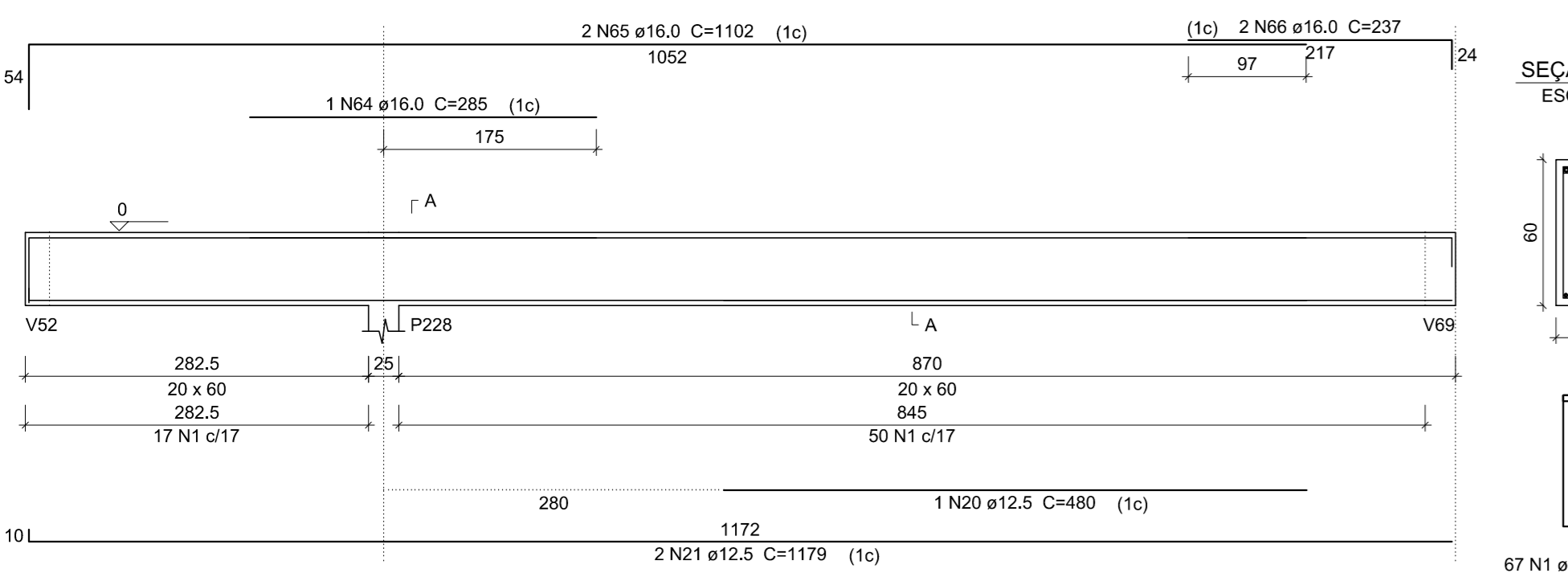
V50
ESC 1:50



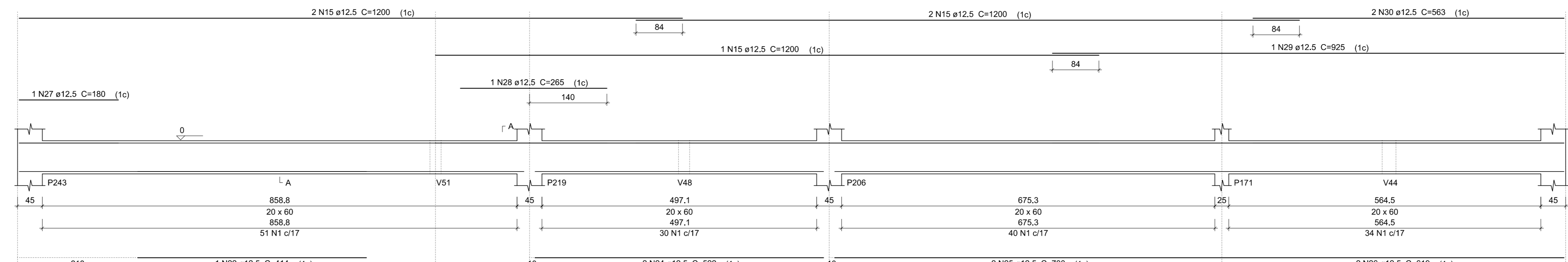
Relação do aço

| ACO | N | DIAM | Q | UNIT | C.TOTAL |
|------|----|------|-----|------|---------|
| | | (cm) | | (cm) | (cm) |
| CA50 | 2 | 5.0 | 706 | 148 | 10448 |
| | 3 | 5.0 | 6 | 29 | 232 |
| | 4 | 5.0 | 4 | 120 | 480 |
| | 5 | 5.0 | 42 | 108 | 4536 |
| | 6 | 5.0 | 304 | 158 | 48032 |
| | 7 | 5.0 | 4 | 110 | 440 |
| | 8 | 5.0 | 6 | 386 | 2316 |
| | 9 | 8.0 | 6 | 1052 | 6312 |
| | 10 | 10.0 | 2 | 742 | 1484 |
| | 11 | 10.0 | 2 | 787 | 1574 |
| | 12 | 12.5 | 2 | 139 | 518 |
| | 13 | 12.5 | 2 | 1165 | 2330 |
| | 14 | 12.5 | 2 | 855 | 1710 |
| | 15 | 12.5 | 2 | 759 | 1418 |
| | 16 | 12.5 | 11 | 1200 | 13200 |
| | 17 | 12.5 | 1 | 532 | 532 |
| | 18 | 12.5 | 2 | 1197 | 2394 |
| | 19 | 12.5 | 2 | 523 | 1046 |
| | 20 | 12.5 | 4 | 712 | 2848 |
| | 21 | 12.5 | 1 | 480 | 480 |
| | 22 | 12.5 | 2 | 1179 | 2358 |
| | 23 | 12.5 | 1 | 414 | 414 |
| | 24 | 12.5 | 2 | 913 | 1826 |
| | 25 | 12.5 | 2 | 922 | 1844 |
| | 26 | 12.5 | 2 | 700 | 1400 |
| | 27 | 12.5 | 4 | 610 | 2476 |
| | 28 | 12.5 | 1 | 180 | 180 |
| | 29 | 12.5 | 1 | 265 | 265 |
| | 30 | 12.5 | 2 | 525 | 1050 |
| | 31 | 12.5 | 2 | 863 | 1726 |
| | 32 | 12.5 | 2 | 607 | 1214 |
| | 33 | 12.5 | 2 | 600 | 1200 |
| | 34 | 12.5 | 2 | 141 | 282 |
| | 35 | 12.5 | 1 | 175 | 175 |
| | 36 | 12.5 | 1 | 249 | 249 |
| | 37 | 12.5 | 2 | 250 | 500 |
| | 38 | 12.5 | 2 | 373 | 746 |
| | 39 | 12.5 | 1 | 454 | 454 |
| | 40 | 12.5 | 2 | 706 | 1412 |
| | 41 | 12.5 | 2 | 762 | 1524 |
| | 42 | 12.5 | 2 | 341 | 682 |
| | 43 | 12.5 | 2 | 408 | 816 |
| | 44 | 12.5 | 4 | 544 | 2176 |
| | 45 | 12.5 | 2 | 190 | 380 |
| | 46 | 12.5 | 2 | 572 | 1144 |
| | 47 | 12.5 | 1 | 540 | 540 |
| | 48 | 12.5 | 2 | 1101 | 2202 |
| | 49 | 12.5 | 2 | 730 | 1460 |
| | 50 | 12.5 | 1 | 247 | 247 |
| | 51 | 12.5 | 2 | 310 | 620 |
| | 52 | 12.5 | 2 | 1197 | 2394 |
| | 53 | 12.5 | 2 | 300 | 600 |
| | 54 | 12.5 | 3 | 384 | 1152 |
| | 55 | 12.5 | 2 | 883 | 1766 |
| | 56 | 12.5 | 2 | 482 | 964 |
| | 57 | 12.5 | 2 | 699 | 1398 |
| | 58 | 12.5 | 2 | 487 | 974 |
| | 59 | 12.5 | 2 | 1018 | 2036 |
| | 60 | 12.5 | 1 | 99 | 99 |
| | 61 | 12.5 | 1 | 99 | 99 |
| | 62 | 12.5 | 1 | 99 | 99 |
| | 63 | 12.5 | 2 | 326 | 652 |
| | 64 | 16.0 | 1 | 285 | 285 |
| | 65 | 16.0 | 2 | 1102 | 2204 |
| | 66 | 16.0 | 2 | 237 | 474 |
| | 67 | 16.0 | 12 | 129 | 1548 |
| | 68 | 16.0 | 2 | 330 | 660 |
| | 69 | 16.0 | 2 | 1166 | 2332 |
| | 70 | 16.0 | 2 | 288 | 576 |
| | 71 | 16.0 | 1 | 205 | 205 |
| | 72 | 16.0 | 1 | 240 | 240 |
| | 73 | 16.0 | 4 | 410 | 1640 |
| | 74 | 16.0 | 2 | 1166 | 2332 |
| | 75 | 16.0 | 2 | 1200 | 2400 |
| | 76 | 16.0 | 2 | 462 | 924 |
| | 77 | 20.0 | 1 | 410 | 410 |
| | 78 | 20.0 | 1 | 530 | 530 |
| | 79 | 20.0 | 2 | 1150 | 2300 |

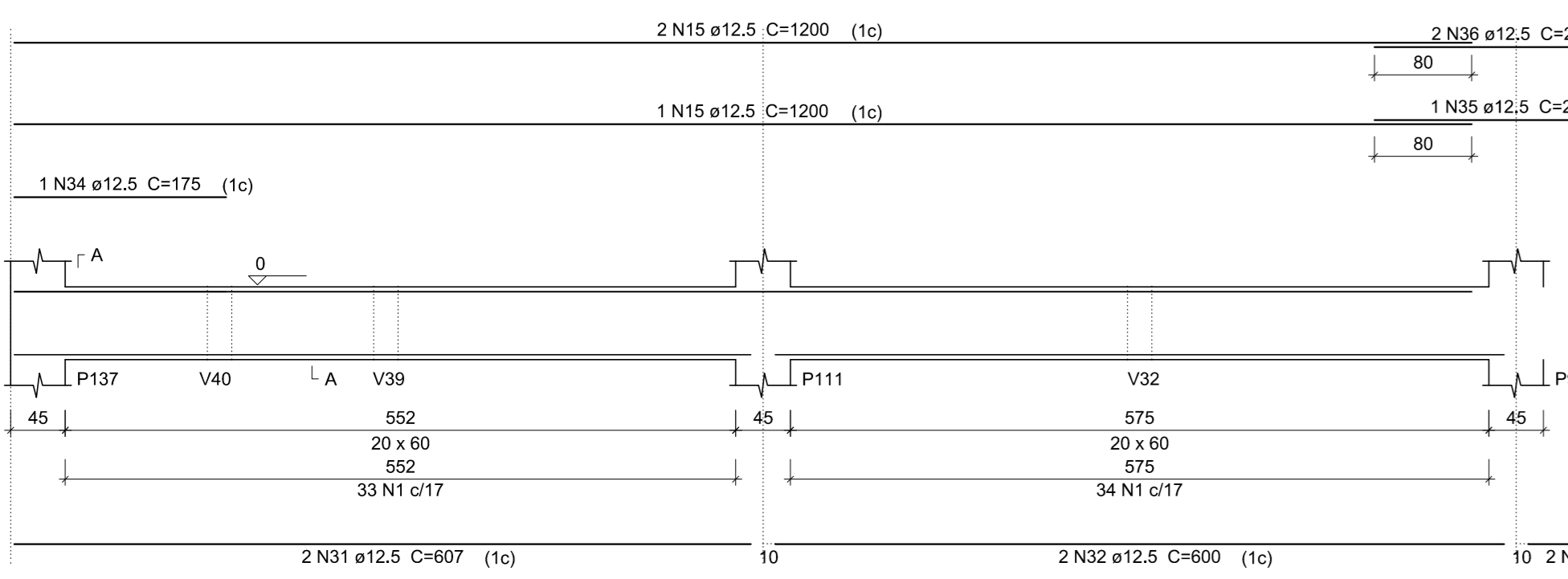
V51
ESC 1:50



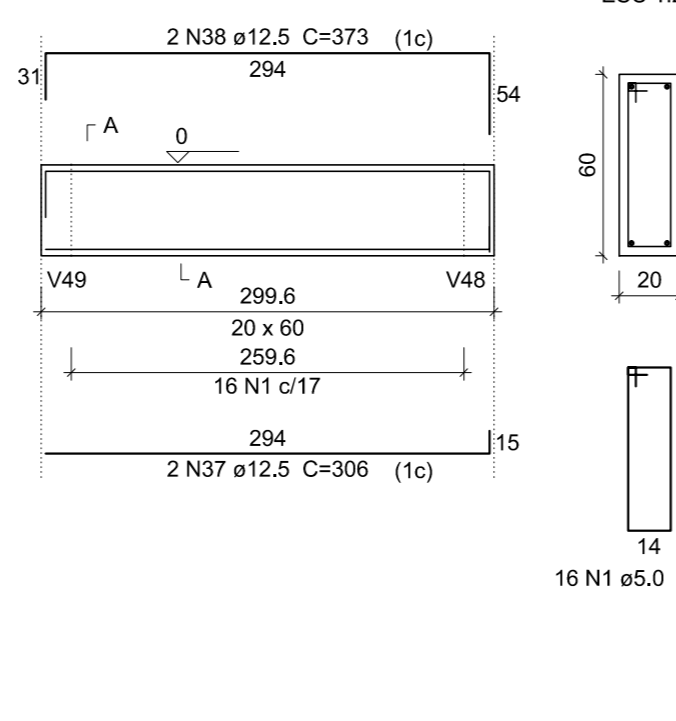
V52
ESC 1:50



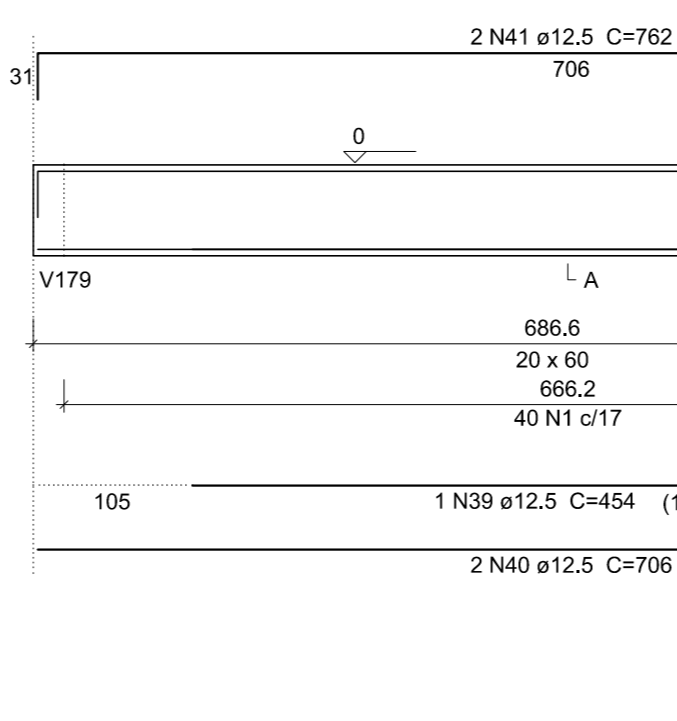
V53
ESC 1:50



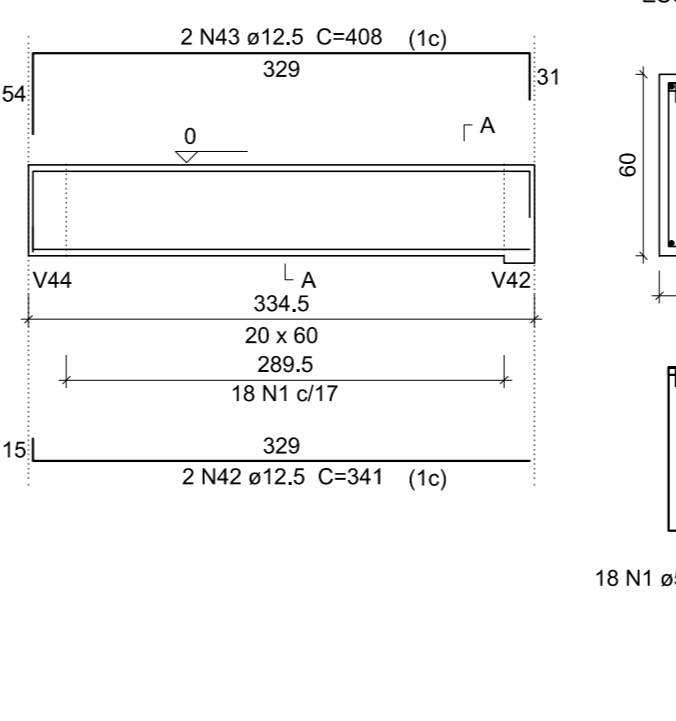
V55
ESC 1:50



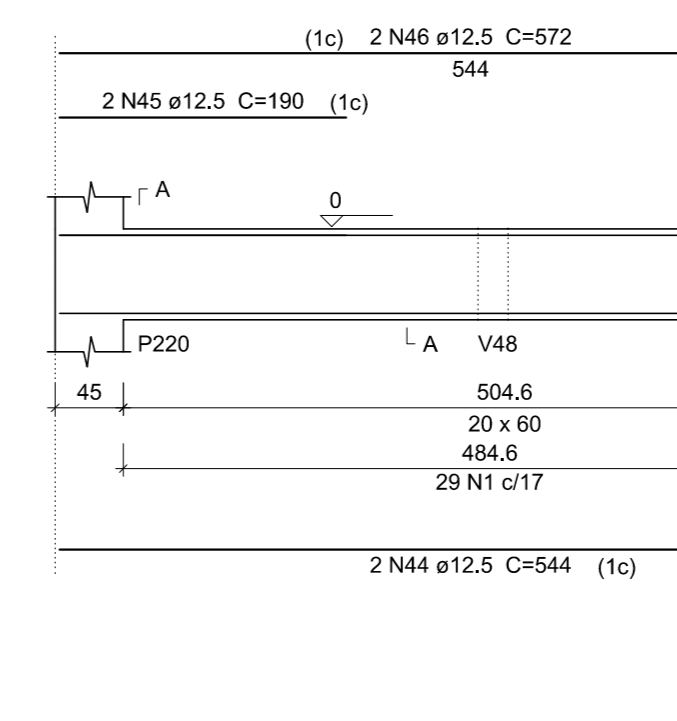
V56
ESC 1:50



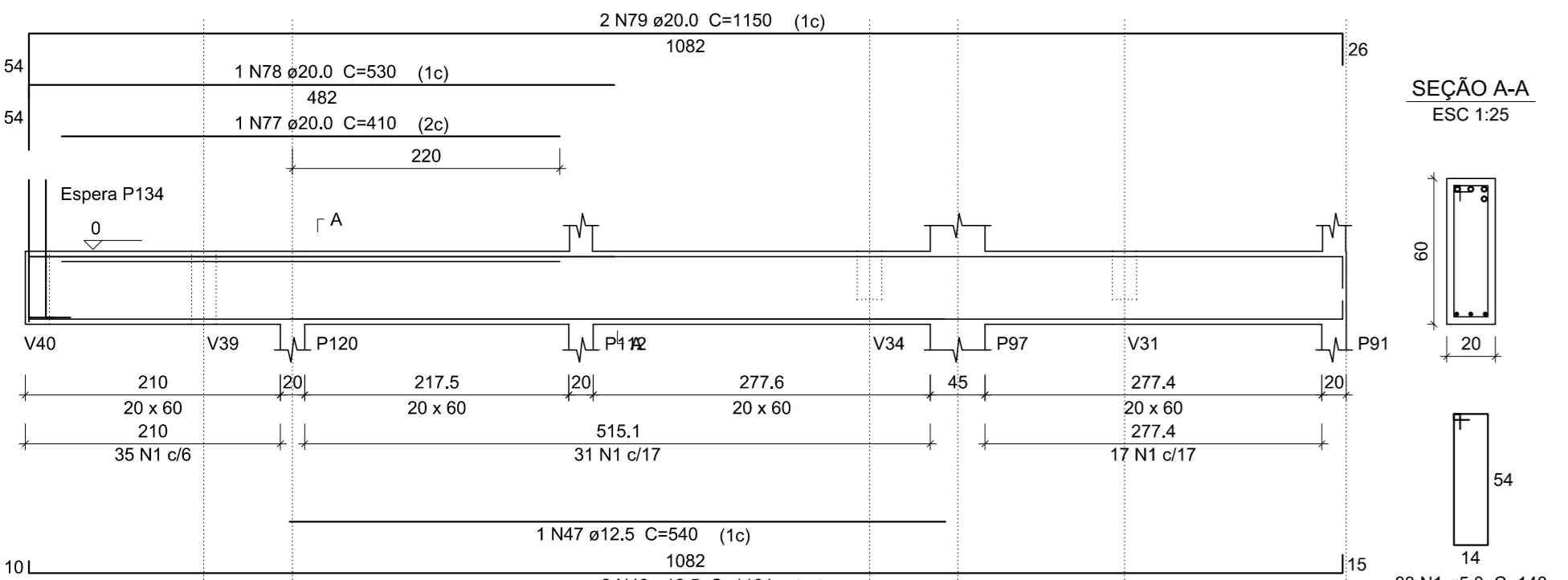
V58
ESC 1:50



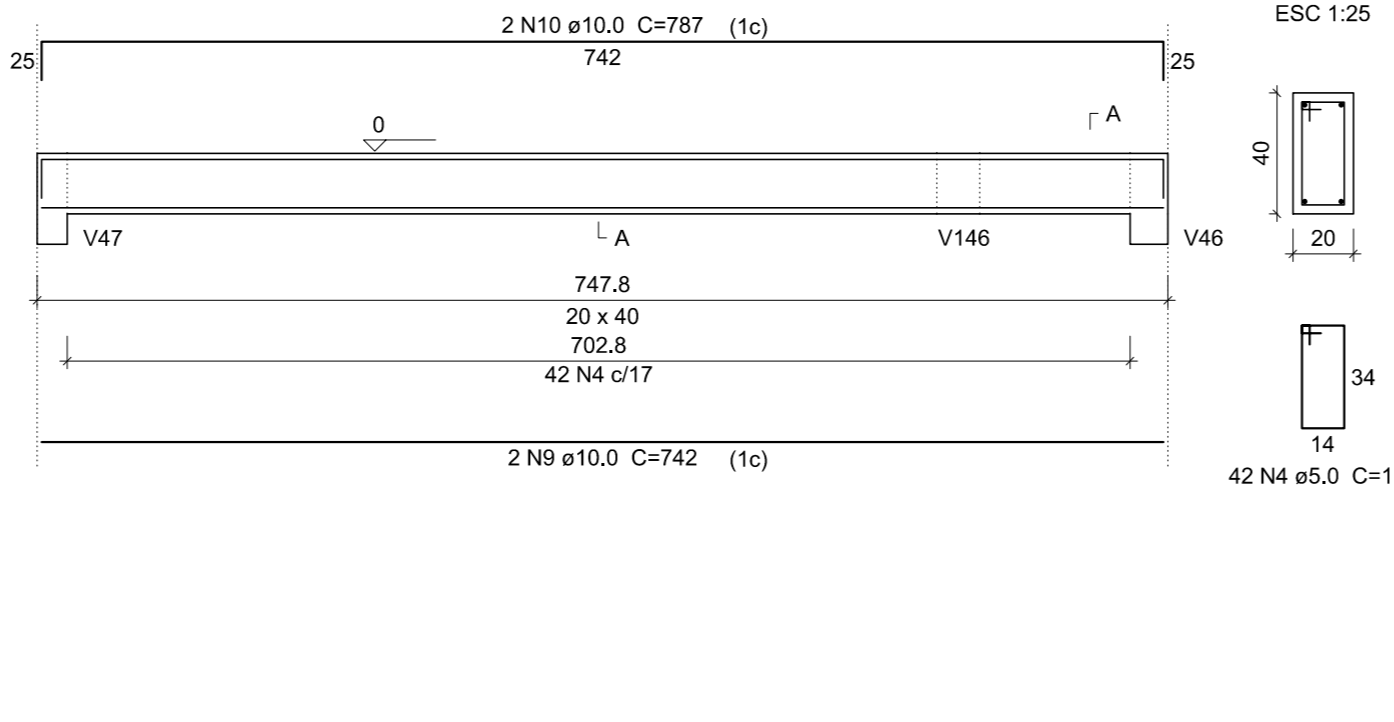
V59
ESC 1:50



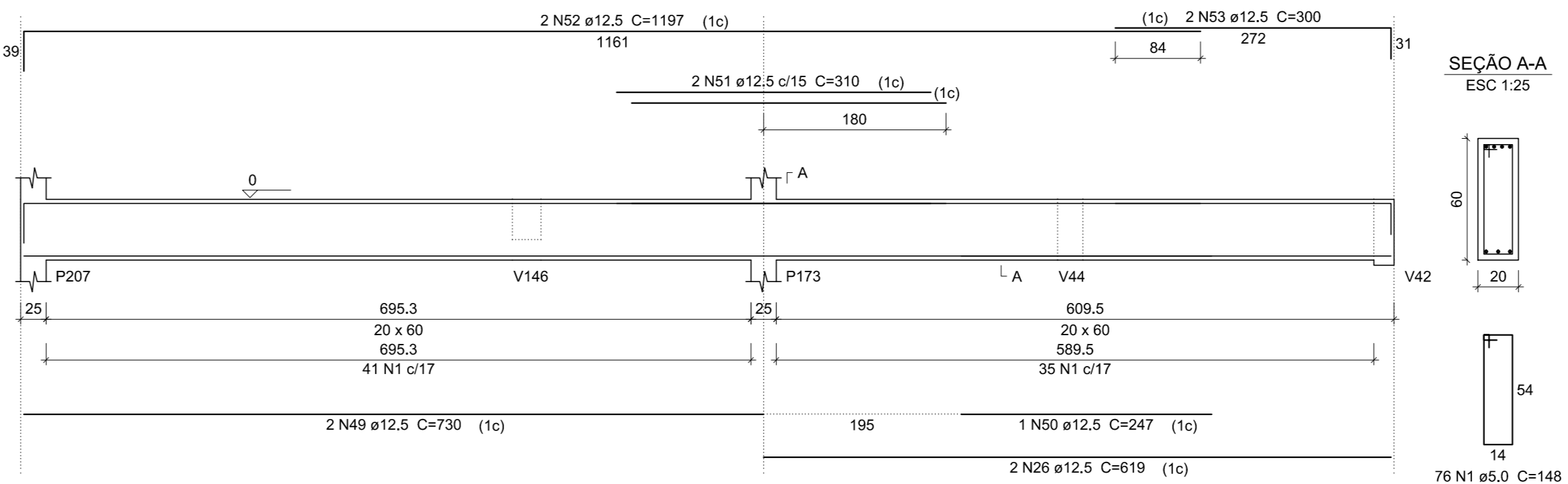
V60
ESC 1:50



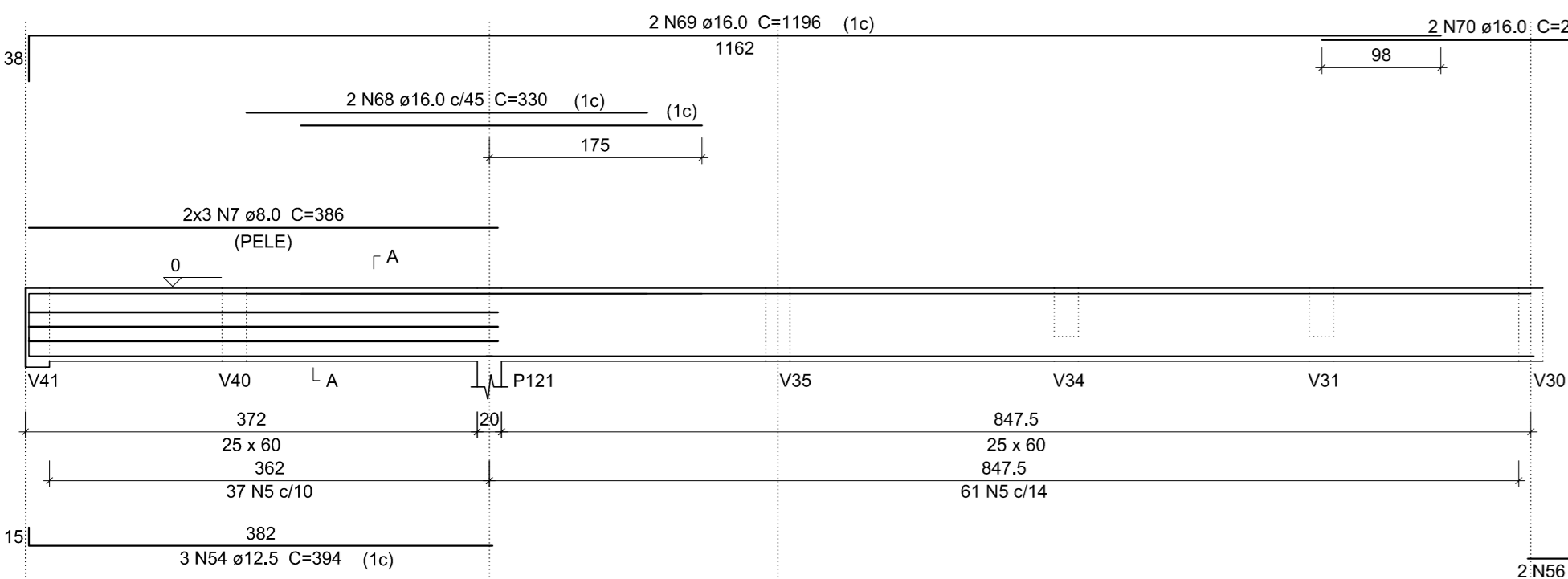
V61
ESC 1:50



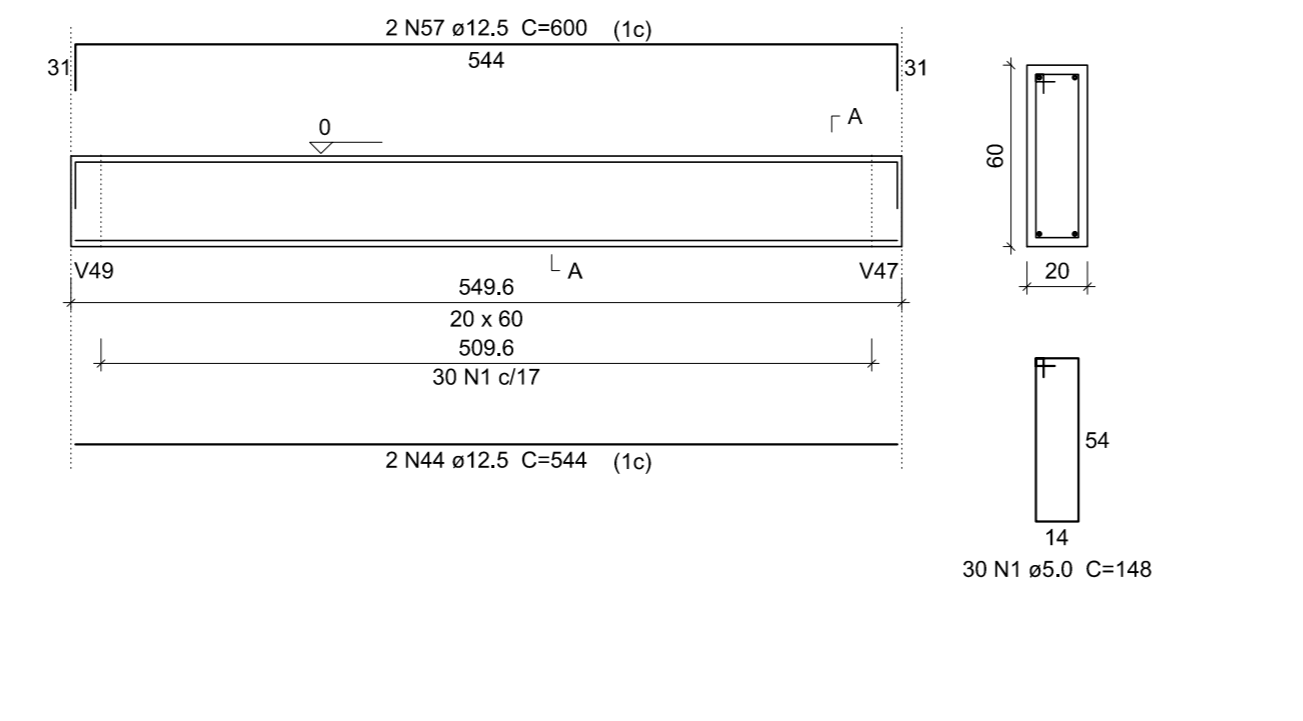
V65
ESC 1:50



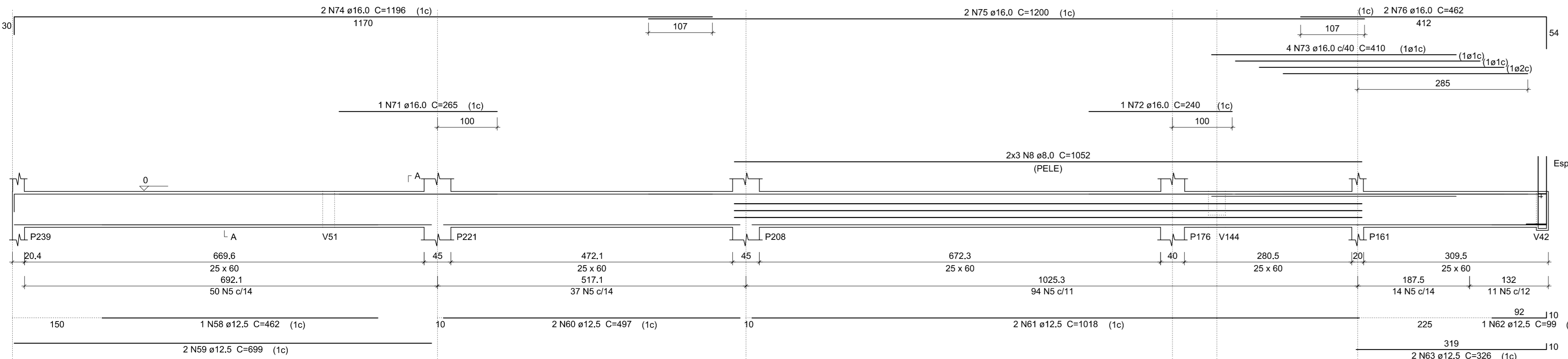
V66
ESC 1:50



V68
ESC 1:50



V69
ESC 1:50



Vigas do baldrame
escala 1:50

Resumo do aço

| ACO | DIAM | C.TOTAL | PESO ± 10 % |
|------|------|---------|-------------|
| | (cm) | (cm) | (kg) |
| CA50 | 5.0 | 86.3 | 37.4 |
| | 10.0 | 33.6 | 22.9 |
| | 12.5 | 696.1 | 737.6 |
| | 16.0 | 160 | 277.8 |
| | 20.0 | 32.4 | 87.9 |
| CA50 | 5.0 | 1582.1 | 288.2 |

Vol. de concreto total (C-30) = 25,96 m³
Área de forma total = 288,15 m²

ESCOLA MUNICIPAL IRMÃ FILOMENA

PROJETO ESTRUTURAL

DESIGNAÇÃO: VIGAS DO BALDRAME
LOCAL: RUA DR. IVO DAQUINO Nº 220, BARRIO CENTRO, TREZE ILHAS/SC
RESP. TÉCNICO: RAFAEL
CONTRATANTE: MUNICÍPIO DE TREZE ILHAS
FOLHA Nº: 07