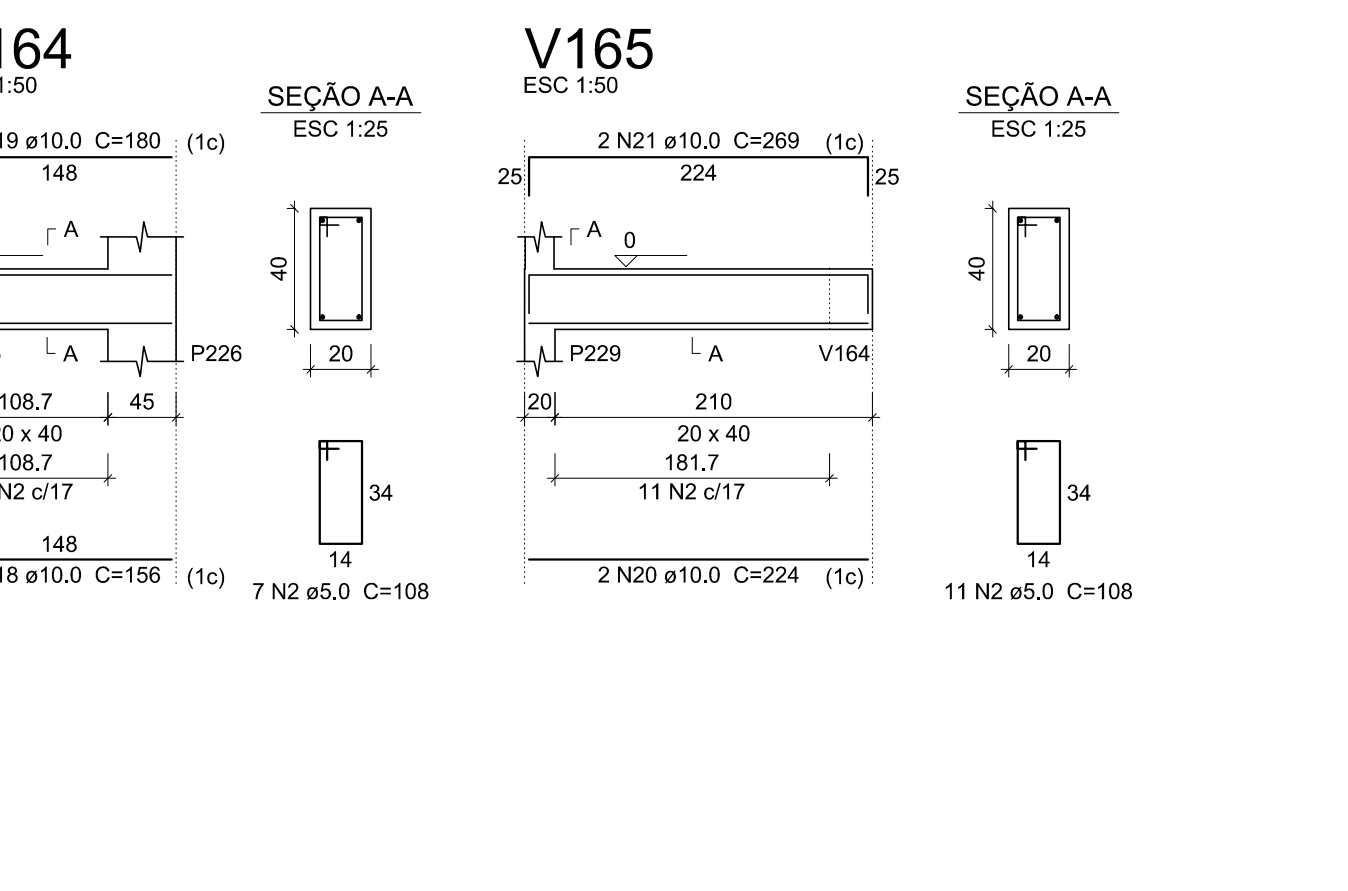
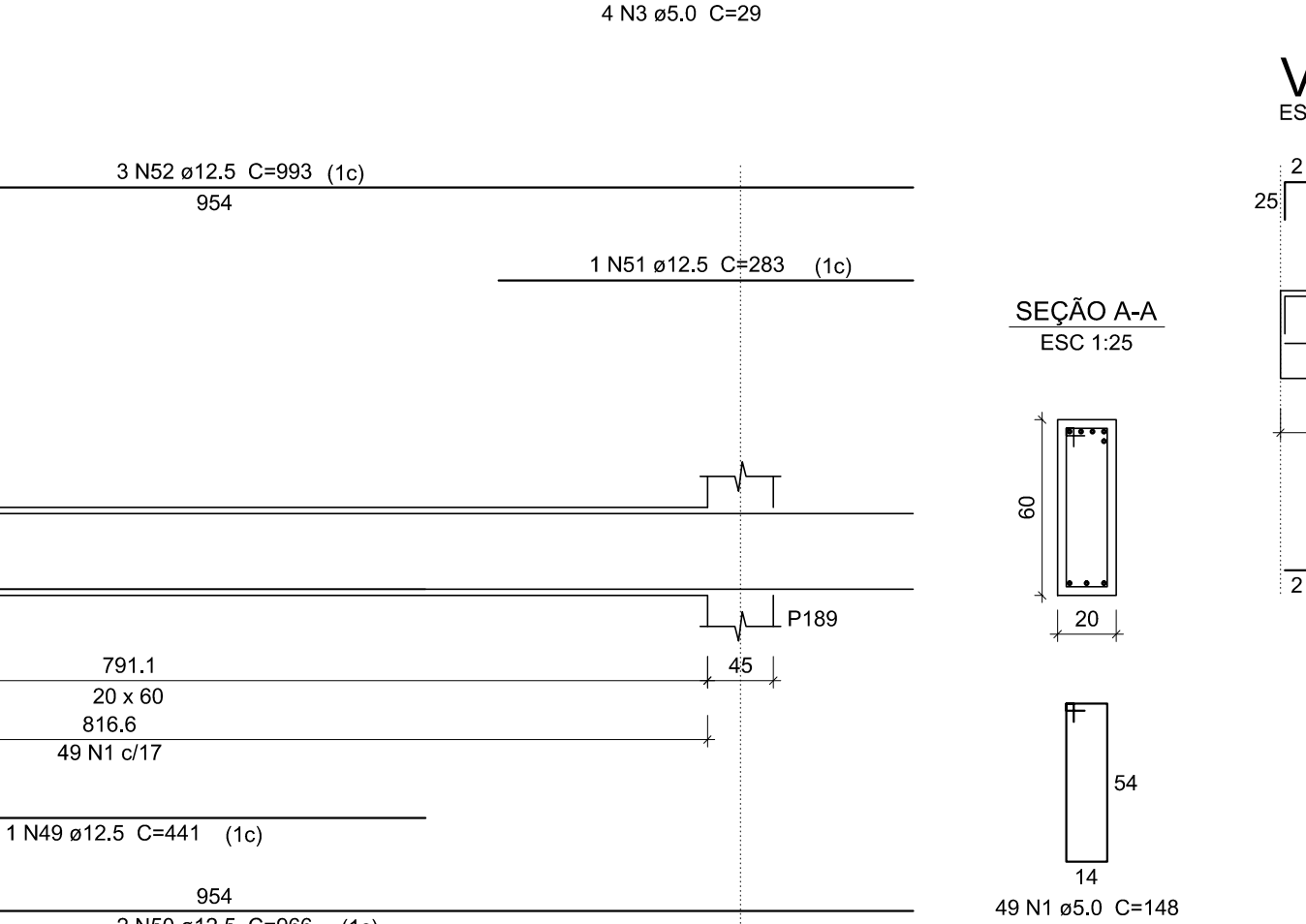
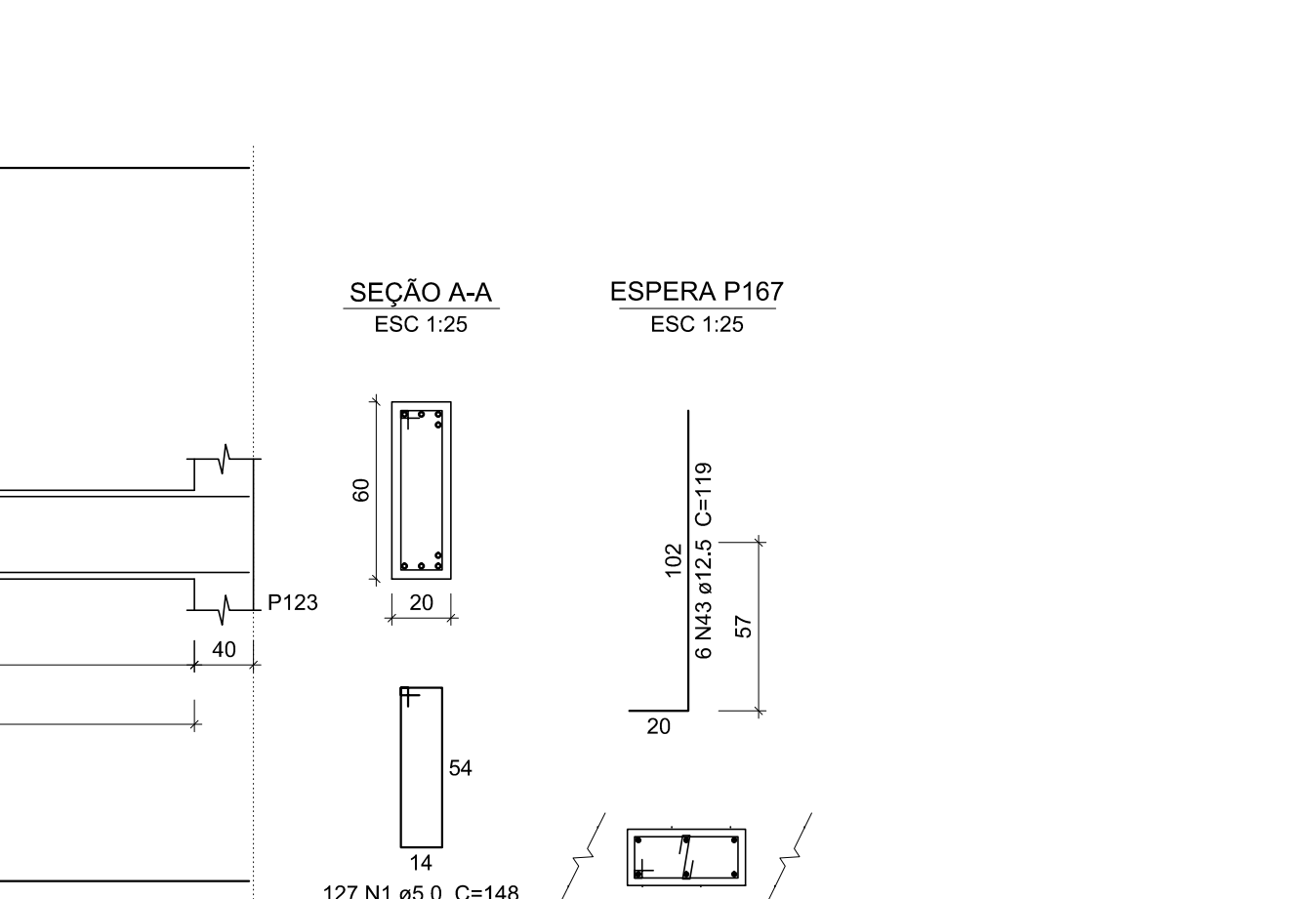
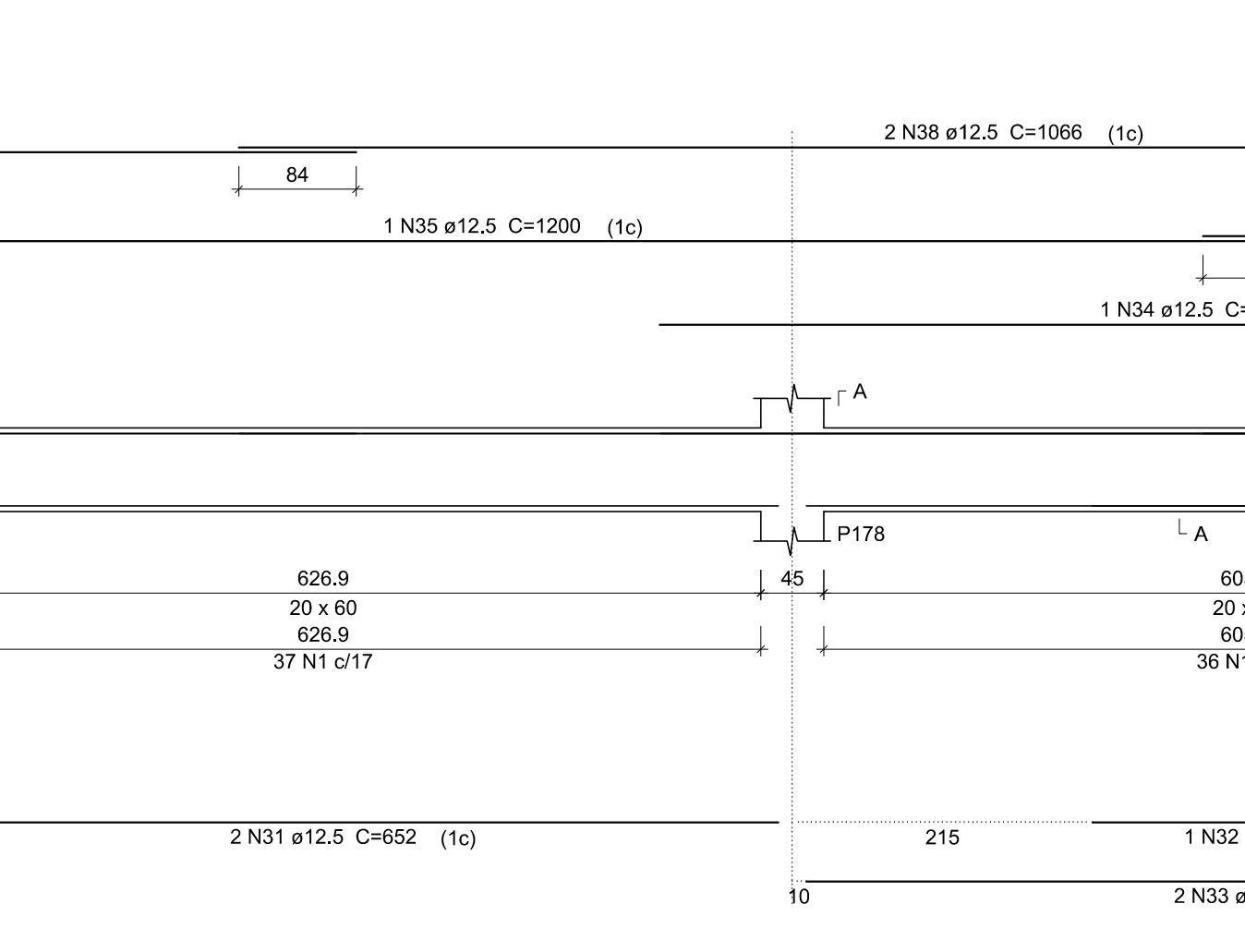
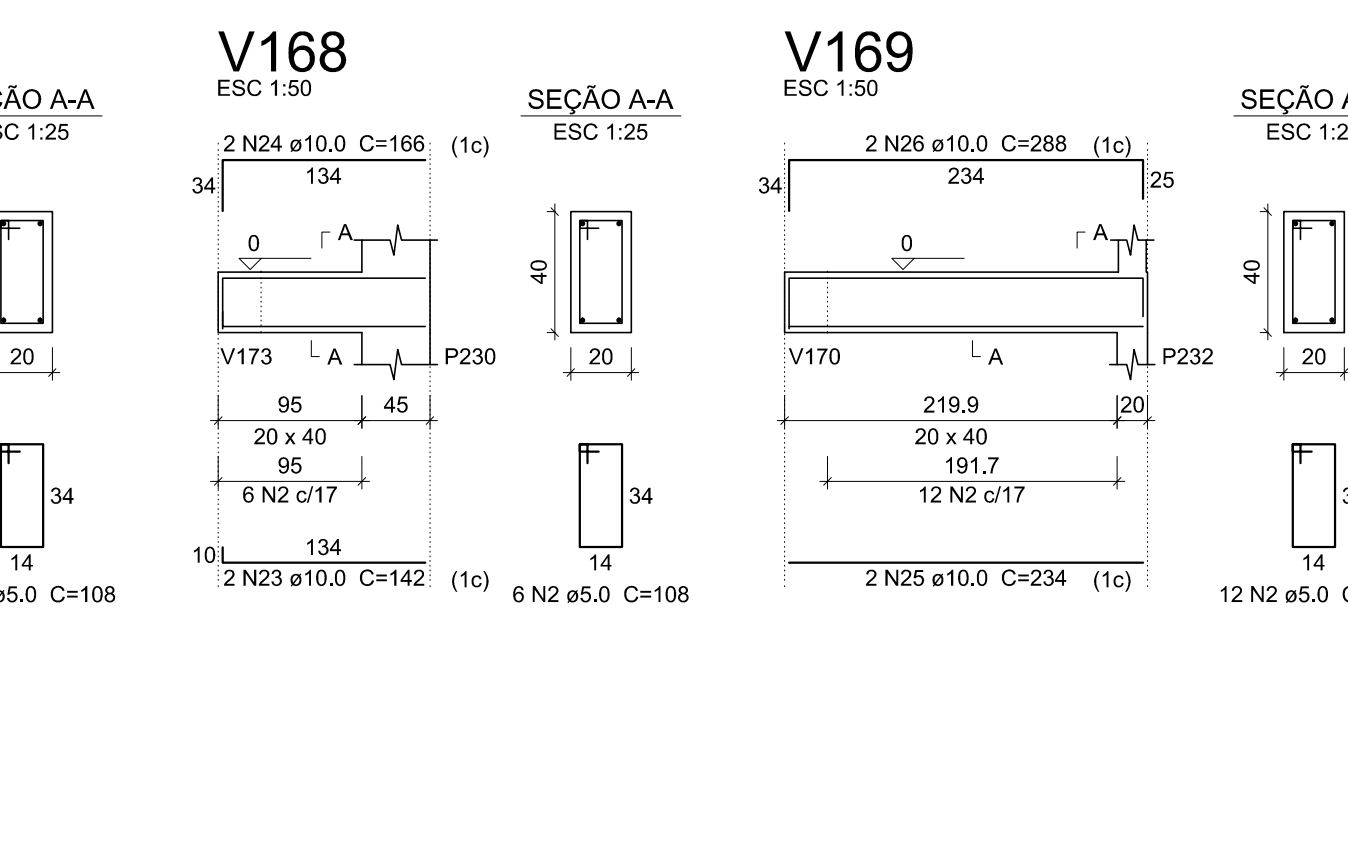
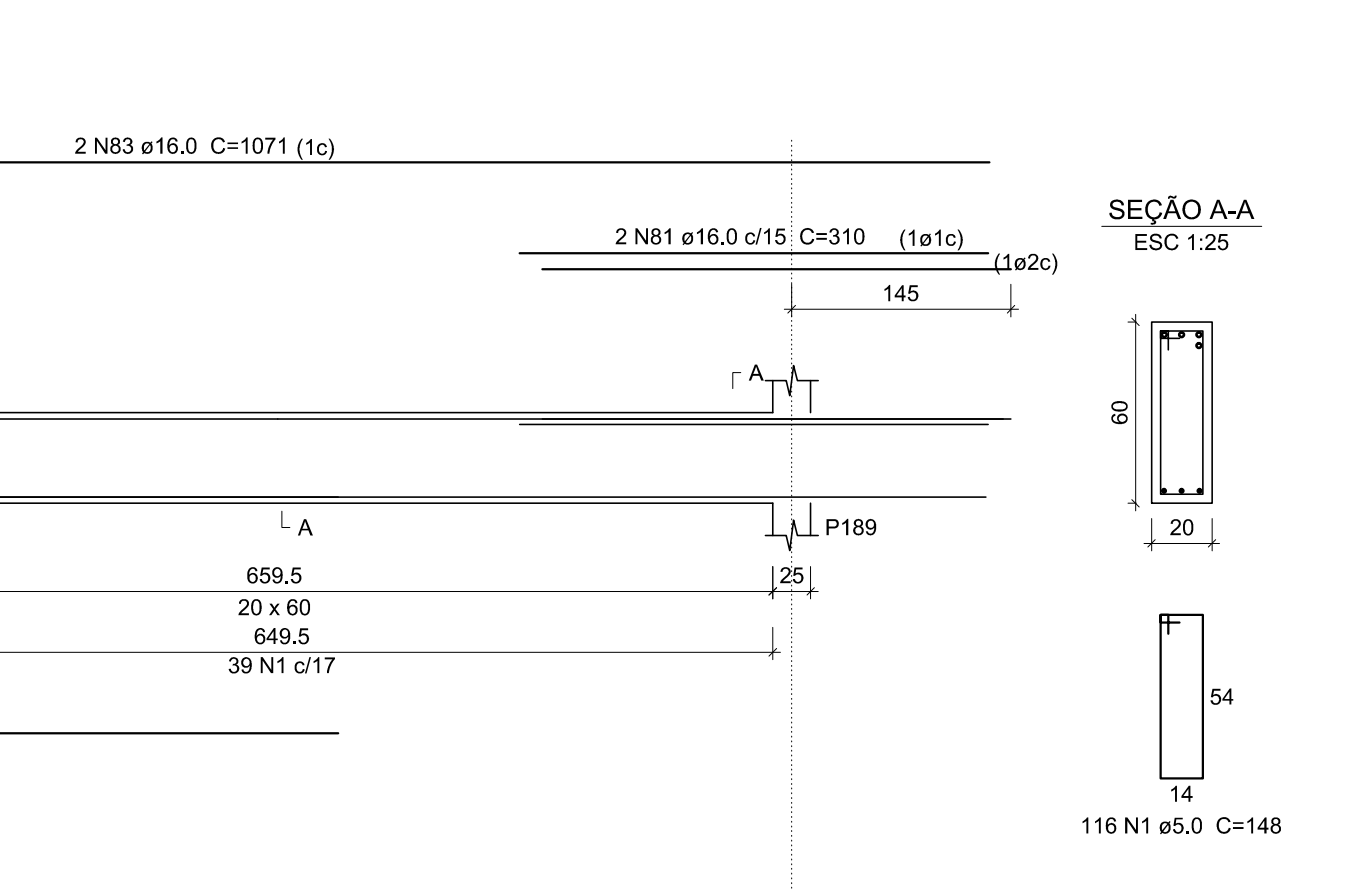
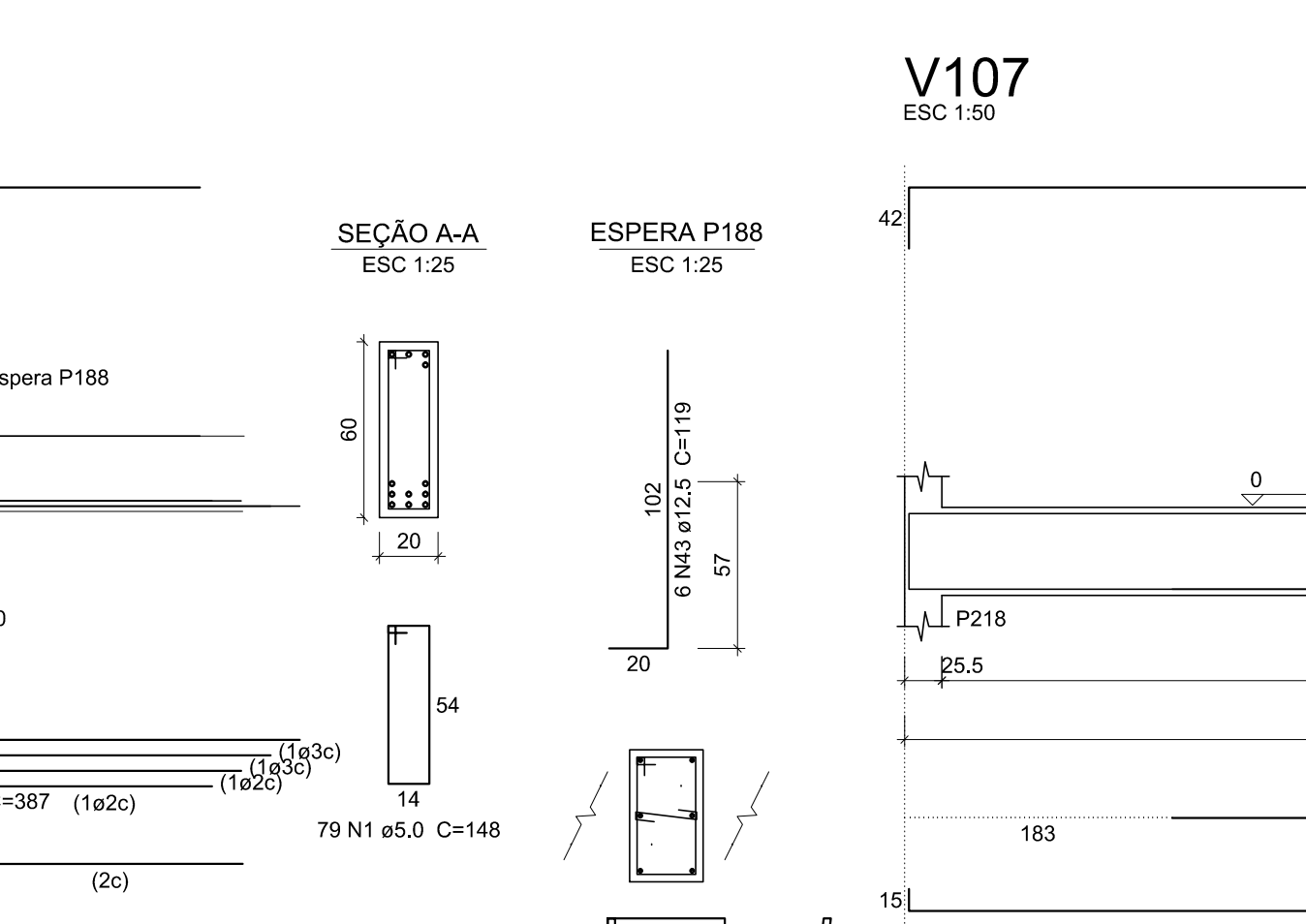
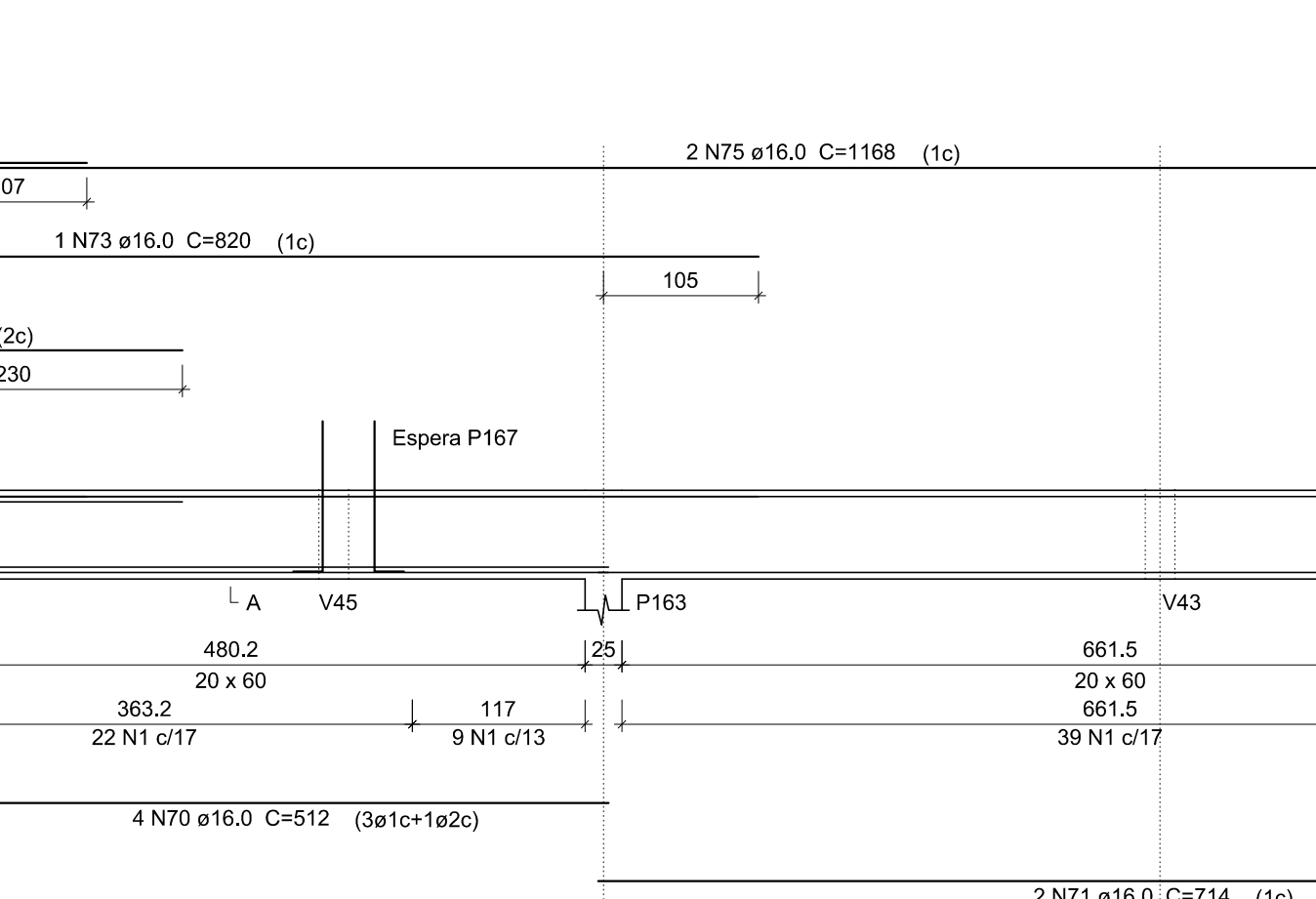
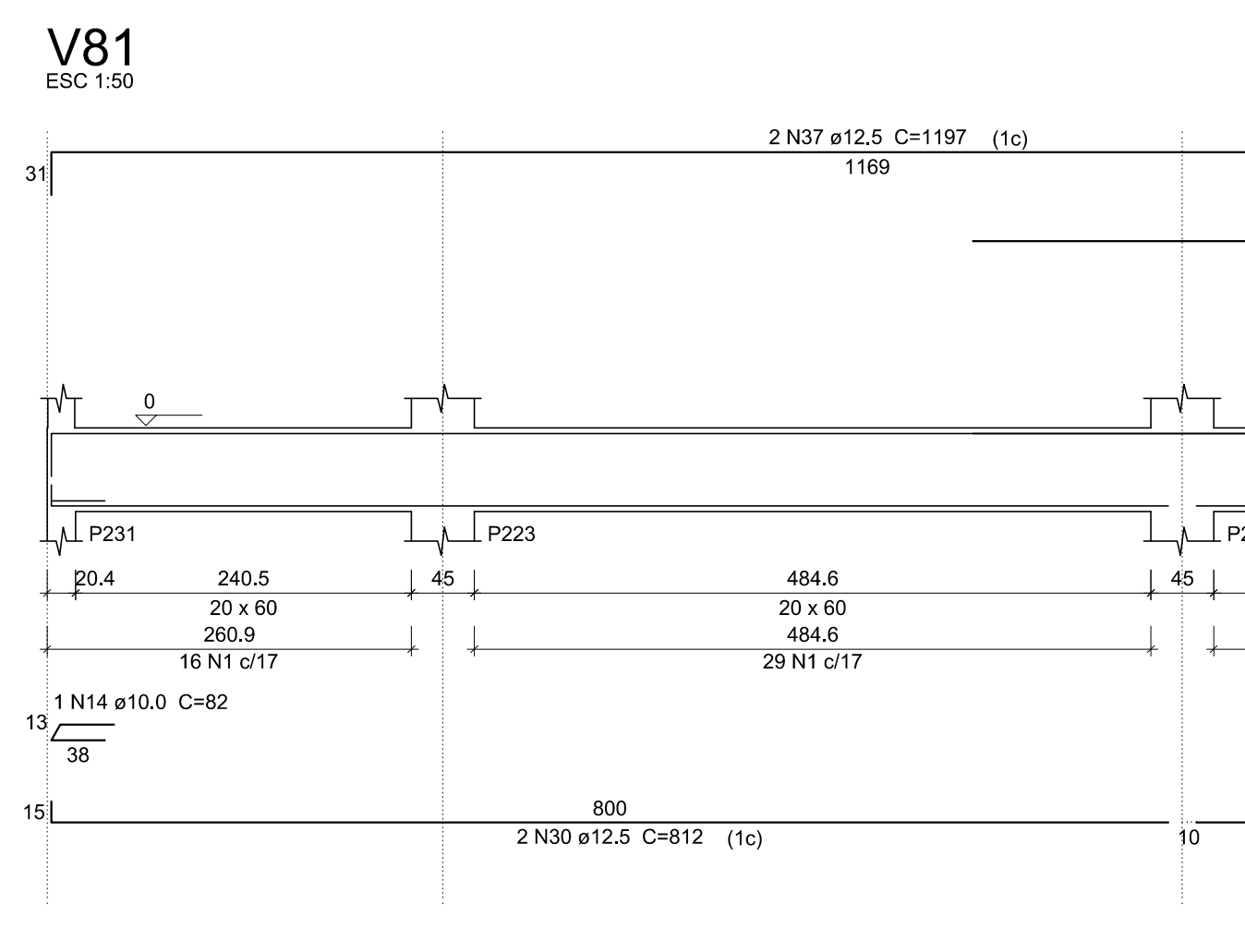
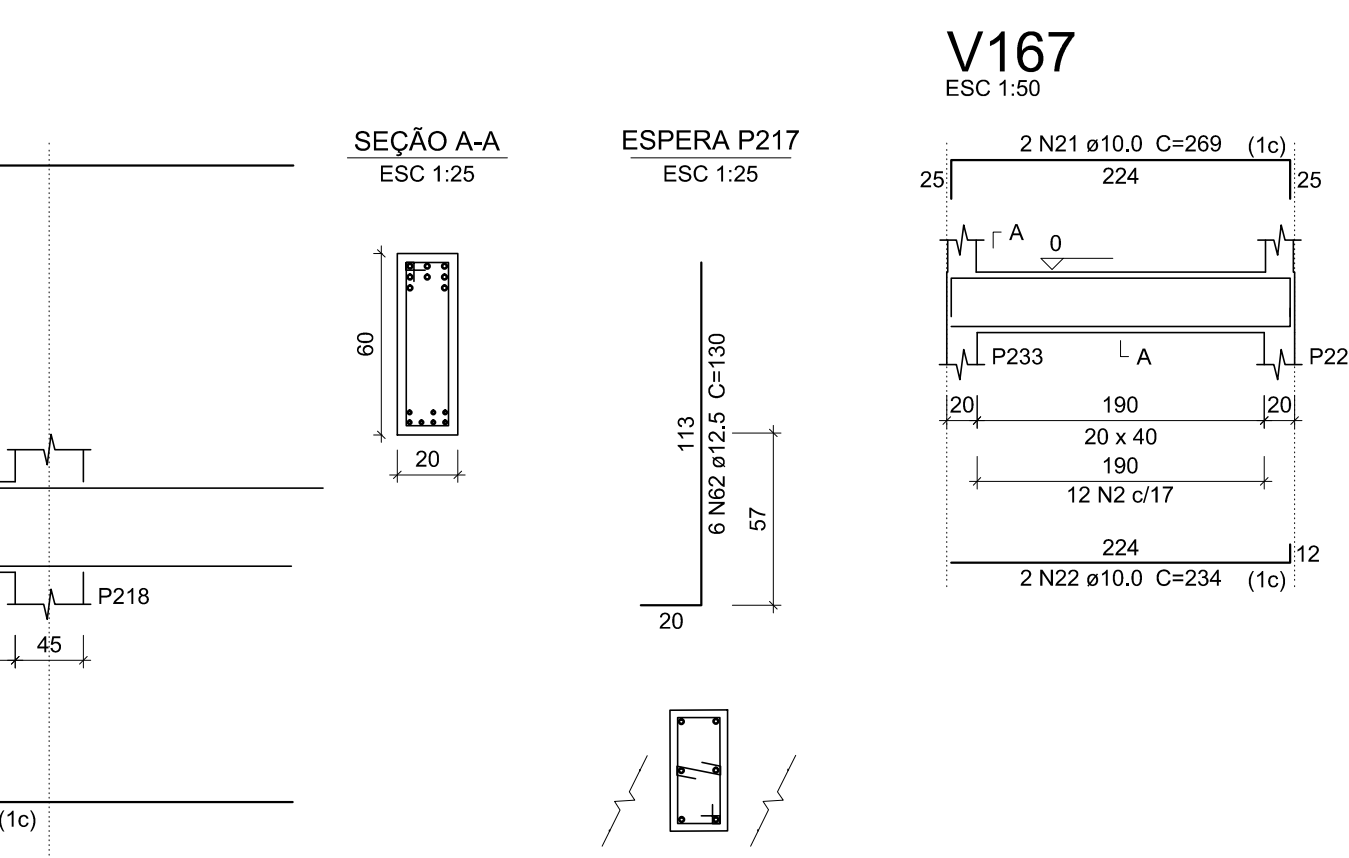
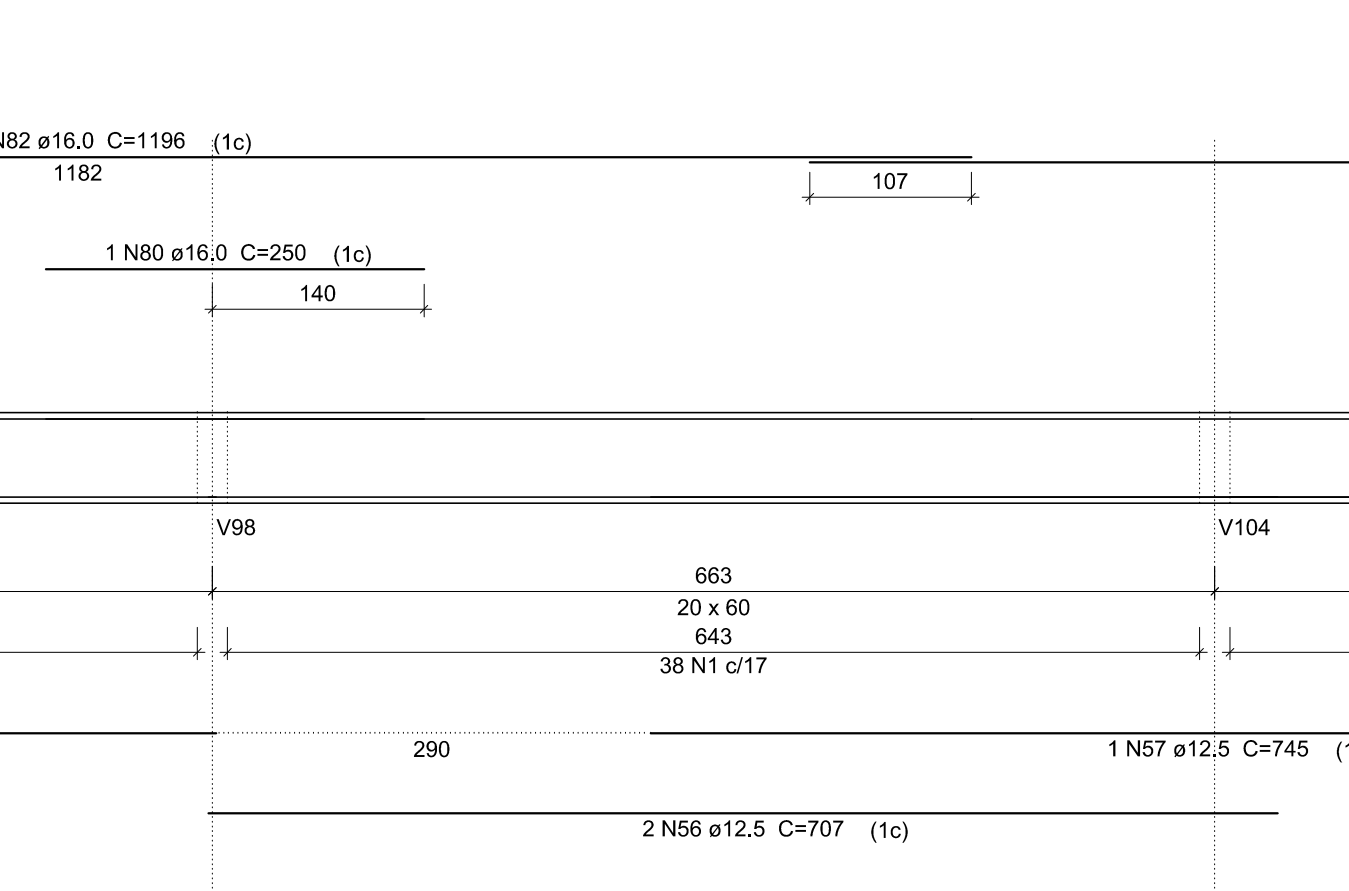
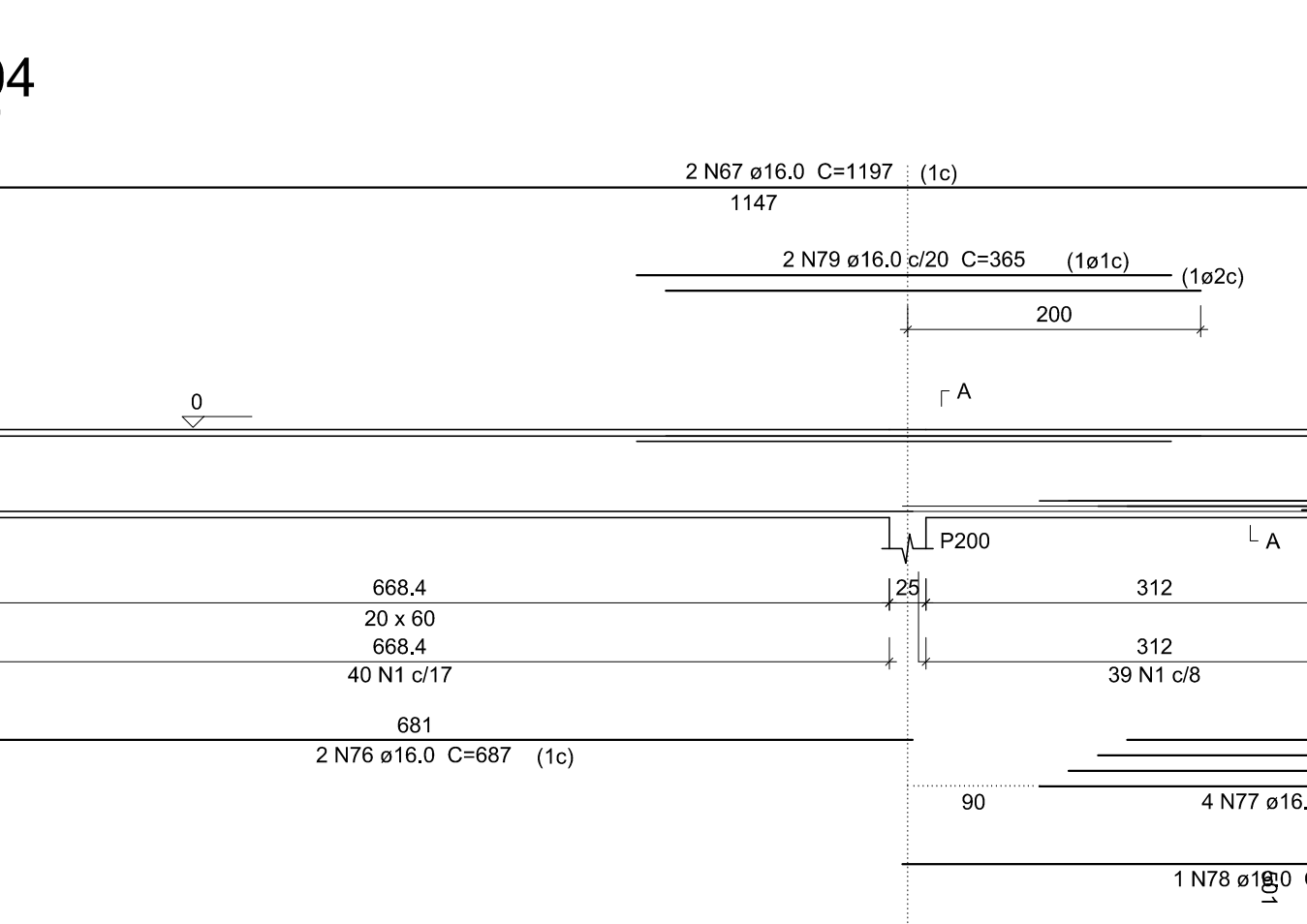
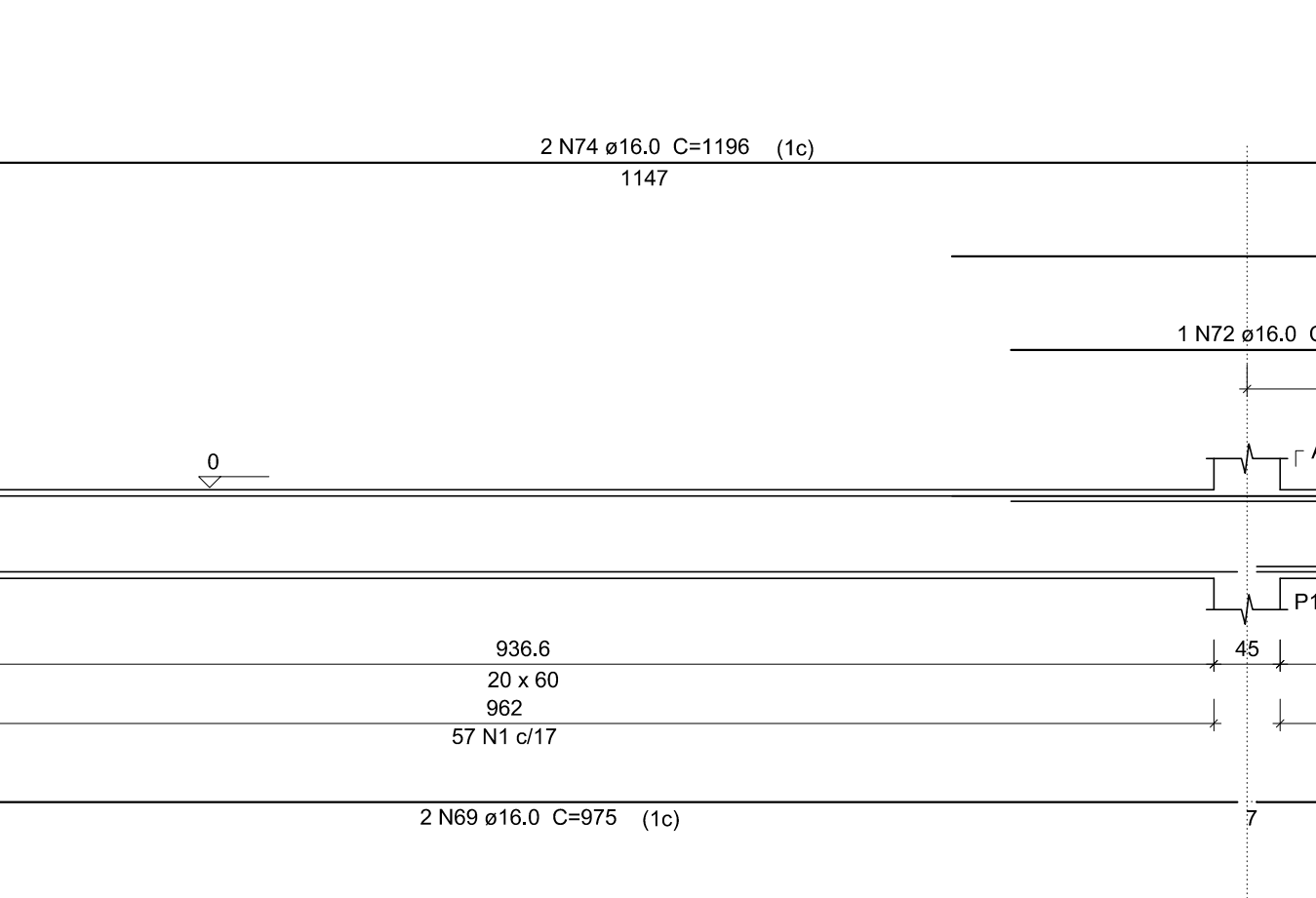
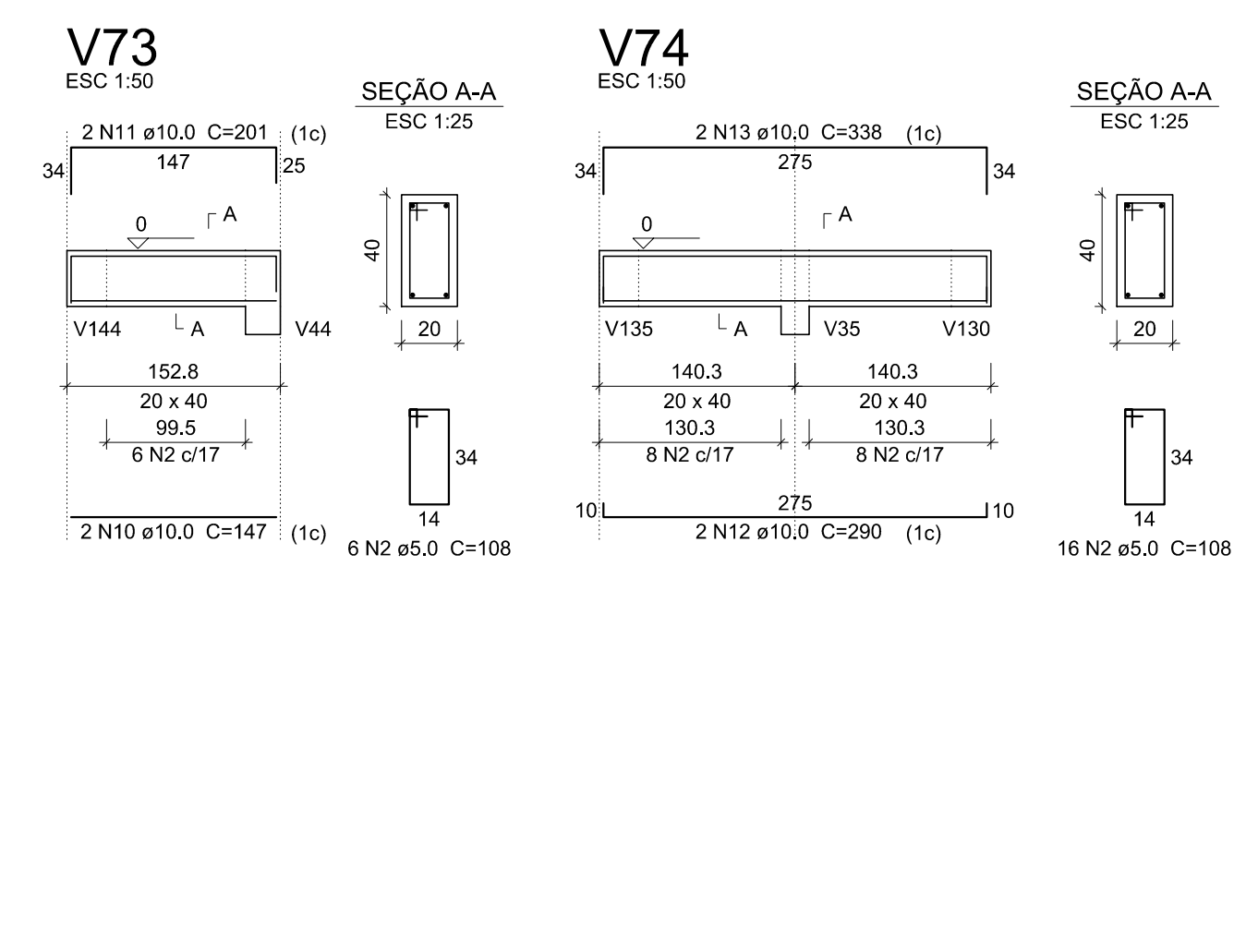


Vigas do baldrame
escala 1:50



Relação do aço

ACO	N	DIAM	C.TOTAL	UNID	QTD
CA50	1	5.0	719	148	106412
CA50	2	5.0	103	168	11124
CA50	3	5.0	4	29	116
CA50	4	5.0	8	110	880
CA50	5	5.0	10	350	3500
CA50	6	5.0	10	132	1320
CA50	7	5.0	4	29	116
CA50	8	8.0	12	148	1176
CA50	9	10.0	2	159	318
CA50	10	10.0	2	147	294
CA50	11	10.0	2	201	402
CA50	12	10.0	2	290	580
CA50	13	10.0	2	338	676
CA50	14	10.0	2	322	644
CA50	15	10.0	6	178	1068
CA50	16	10.0	4	232	928
CA50	17	10.0	2	223	446
CA50	18	10.0	2	156	312
CA50	19	10.0	2	180	360
CA50	20	10.0	2	234	468
CA50	21	10.0	4	269	1076
CA50	22	10.0	2	234	468
CA50	23	10.0	2	142	284
CA50	24	10.0	2	166	332
CA50	25	10.0	2	234	468
CA50	26	10.0	2	288	576
CA50	27	12.5	3	238	714
CA50	28	12.5	2	996	1992
CA50	29	12.5	2	341	682
CA50	30	12.5	2	812	1624
CA50	31	12.5	2	652	1304
CA50	32	12.5	1	282	564
CA50	33	12.5	2	660	1320
CA50	34	12.5	3	760	2280
CA50	35	12.5	3	1200	3600
CA50	36	12.5	1	378	756
CA50	37	12.5	4	1197	4788
CA50	38	12.5	2	1066	2132
CA50	39	12.5	2	660	1320
CA50	40	12.5	2	600	1200
CA50	41	12.5	2	119	238
CA50	42	12.5	2	280	560
CA50	43	12.5	18	119	2142
CA50	44	12.5	1	1046	2092
CA50	45	12.5	6	176	1056
CA50	46	12.5	1	185	370
CA50	47	12.5	2	285	570
CA50	48	12.5	2	211	422
CA50	49	12.5	1	441	882
CA50	50	12.5	2	966	1932
CA50	51	12.5	1	283	566
CA50	52	12.5	3	993	2979
CA50	53	12.5	2	188	376
CA50	54	12.5	2	229	458
CA50	55	12.5	2	682	1364
CA50	56	12.5	2	707	1414
CA50	57	12.5	1	745	1490
CA50	58	12.5	2	818	1636
CA50	59	12.5	2	753	1506
CA50	60	12.5	2	601	1202
CA50	61	12.5	2	563	1126
CA50	62	12.5	6	130	780
CA50	63	16.0	4	390	1560
CA50	64	16.0	1	542	542
CA50	65	16.0	1	627	627
CA50	66	16.0	1	590	590
CA50	67	16.0	4	1197	4788
CA50	68	16.0	2	351	702
CA50	69	16.0	2	915	1830
CA50	70	16.0	4	512	2048
CA50	71	16.0	2	714	1428
CA50	72	16.0	1	390	390
CA50	73	16.0	1	820	820
CA50	74	16.0	2	1196	2392
CA50	75	16.0	2	1168	2336
CA50	76	16.0	2	667	1334
CA50	77	16.0	4	397	1588
CA50	78	16.0	4	501	2004
CA50	79	16.0	2	365	730
CA50	80	16.0	1	290	290
CA50	81	16.0	2	310	620
CA50	82	16.0	2	1196	2392
CA50	83	16.0	2	1071	2142
CA50	84	16.0	2	1196	2392
CA50	85	16.0	2	502	1004

Resumo do aço

ACO	DIAM	C.TOTAL	PESO + 10%
CA50	5.0	178	7.7
CA50	10.0	912	61.8
CA50	16.0	353.9	614.4
CA50	5.0	1203.2	204
CA50 TOTAL		1196.4	688.3

Vol. de concreto total (C-30) = 26.49 m³
Área de forma total = 310.66 m²

HB ENGENHARIA
PROFISSÕES E EXECUÇÕES DE OBRAS

ALEX SANDRO BOLIGON
ENGENHEIRO CIVIL
CREASC 06721-4

ALLAN FELIPE MELCHIORETTO
ENGENHEIRO CIVIL
CREASC 14717-4

RUA NORBERTO SILVEIRA JUNIOR, nº 191, SL. 05
CENTRO - GUARABIRIM - SC
47.3376-2317 / 99125-2646 / 98480-4518

ESCOLA MUNICIPAL IRMÃ FILOMENA

PROJETO ESTRUTURAL

DESCRIÇÃO: VIGAS DO BALDRAME: _____ ESCALA: _____ INDICADA

PROPRIETÁRIO: MUNICÍPIO DE TREZE TILAS: _____ DESenhO: _____

LOCAL: RUA DR. IVO DAQUINO Nº 220, BAIRRO CENTRO, TREZE TILAS-SC: _____ DATA: _____

RESP. TÉCNICO: _____ COORDINADOR: _____ FOLHA Nº: _____

ALEX SANDRO BOLIGON
ENGENHEIRO CIVIL
CREASC 06721-4

MUNICÍPIO DE TREZE TILAS
CNPJ: 07.251.000/41
MAYRO DRECH
CPF: 460.445.809/00
CARGO: PREFEITO