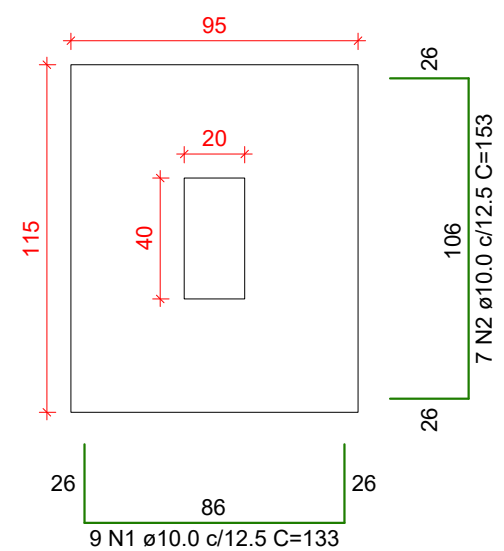
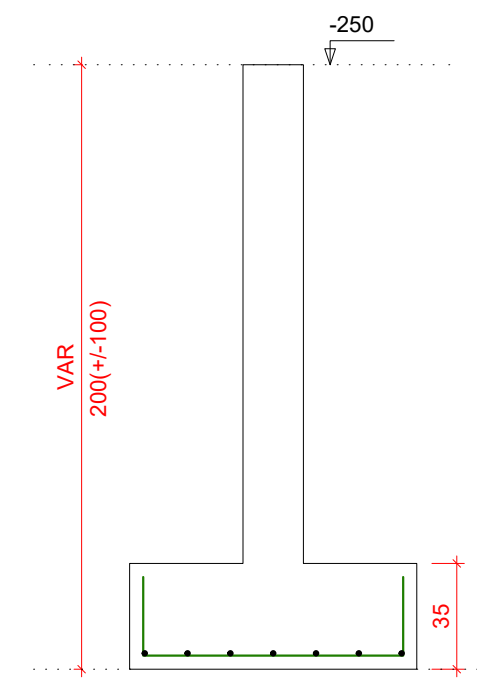


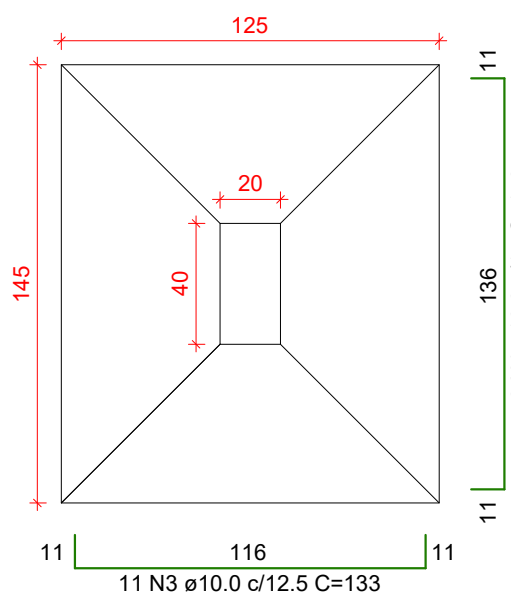
S18=S19=S20  
PLANTA  
ESC 1:25



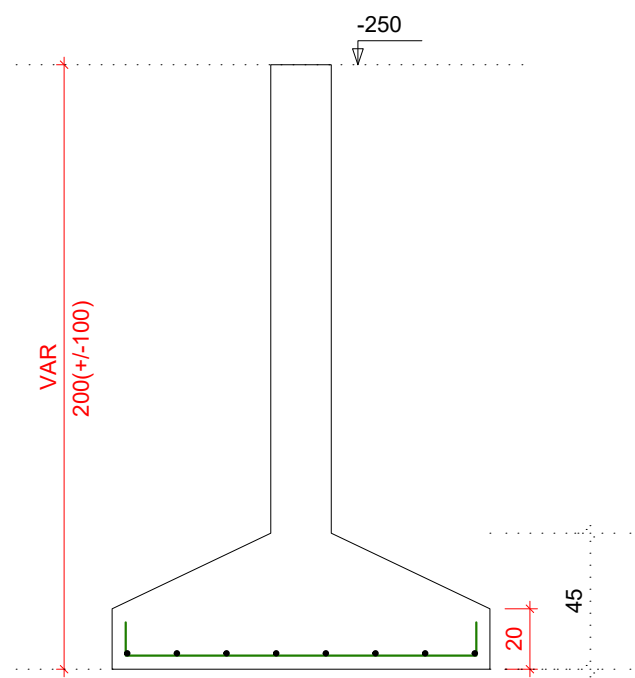
CORTE  
ESC 1:25



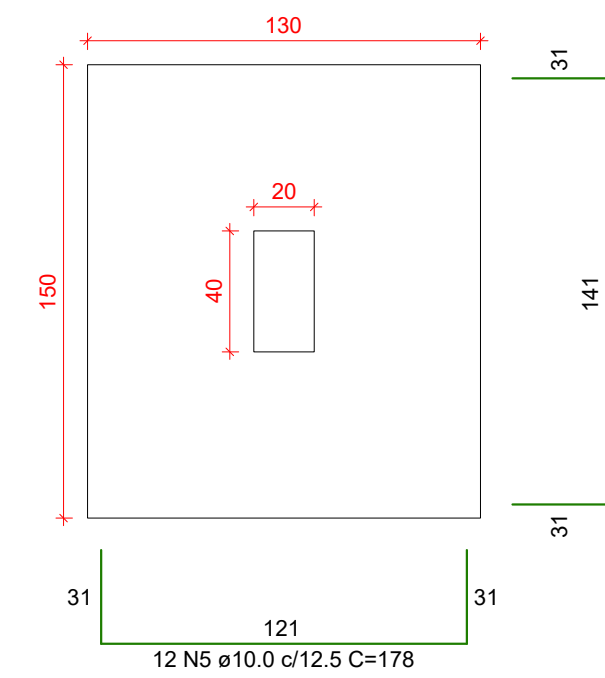
S21=S22=S31=S32  
PLANTA  
ESC 1:25



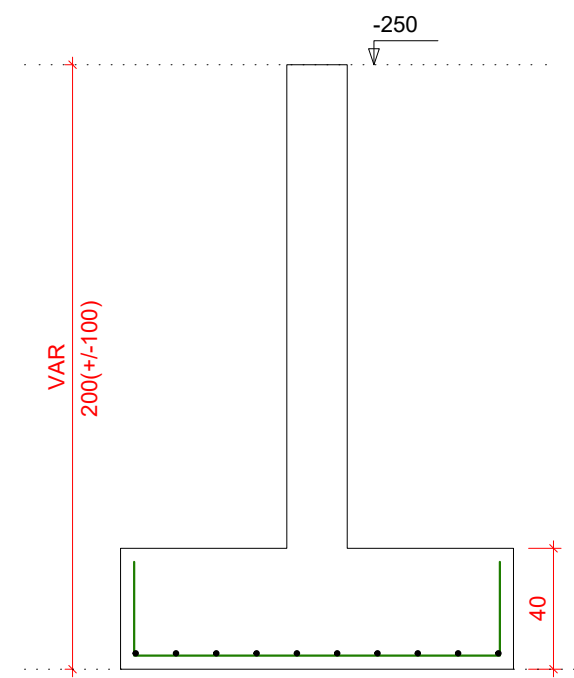
CORTE  
ESC 1:25



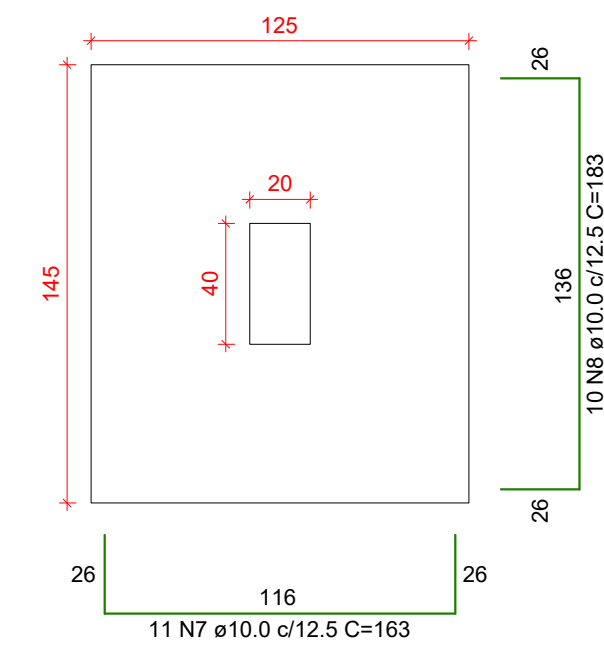
S23  
PLANTA  
ESC 1:25



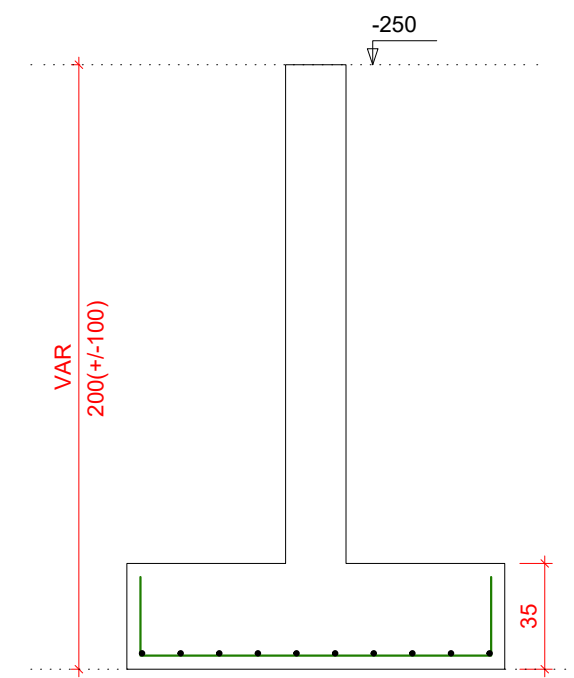
CORTE  
ESC 1:25



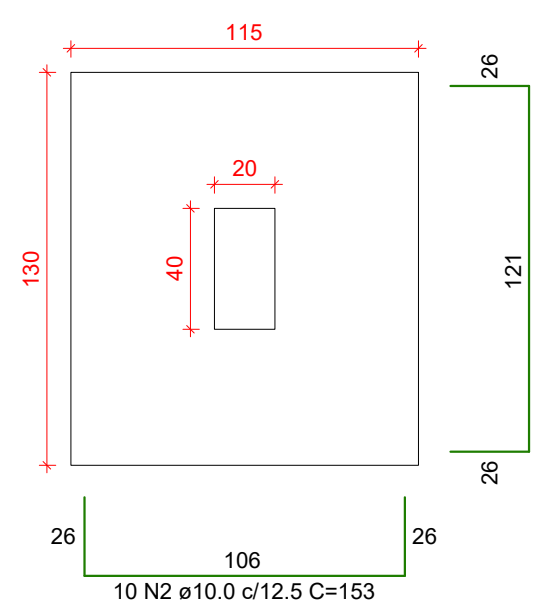
S33=S43  
PLANTA  
ESC 1:25



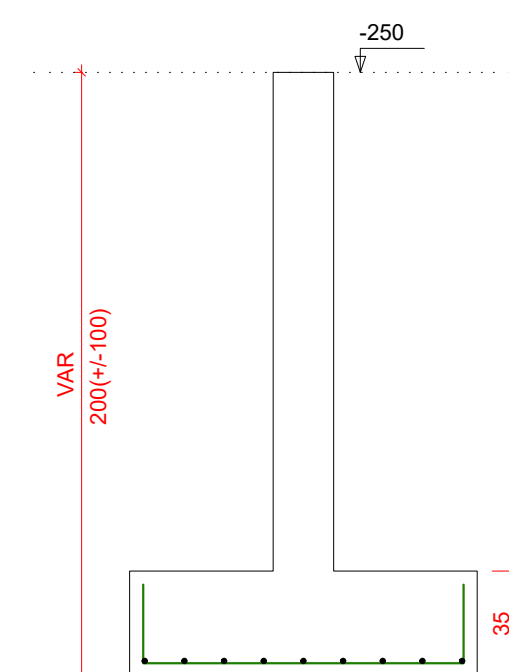
CORTE  
ESC 1:25



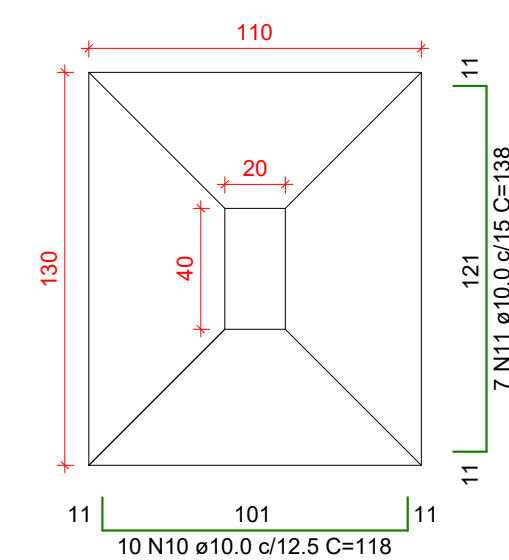
S41=S51  
PLANTA  
ESC 1:25



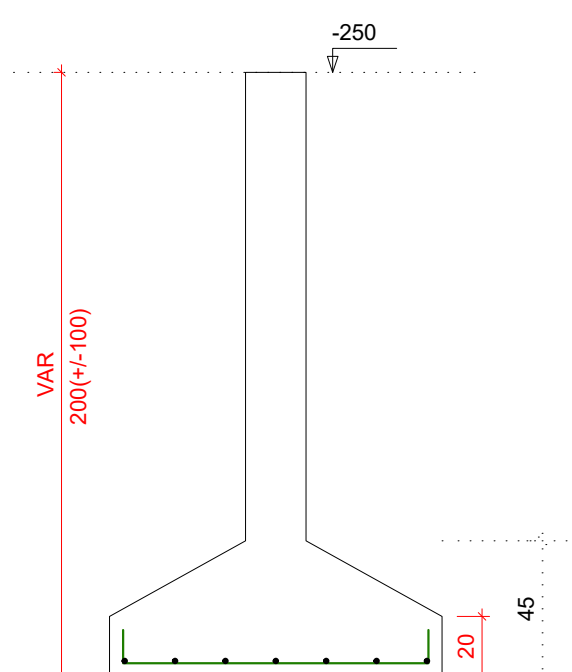
CORTE  
ESC 1:25



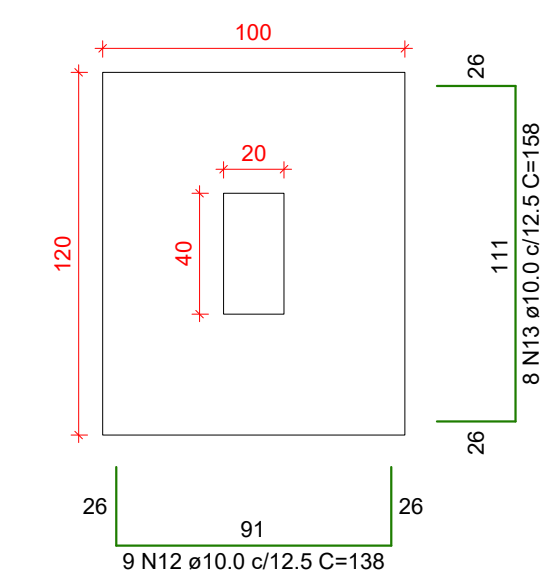
S42  
PLANTA  
ESC 1:25



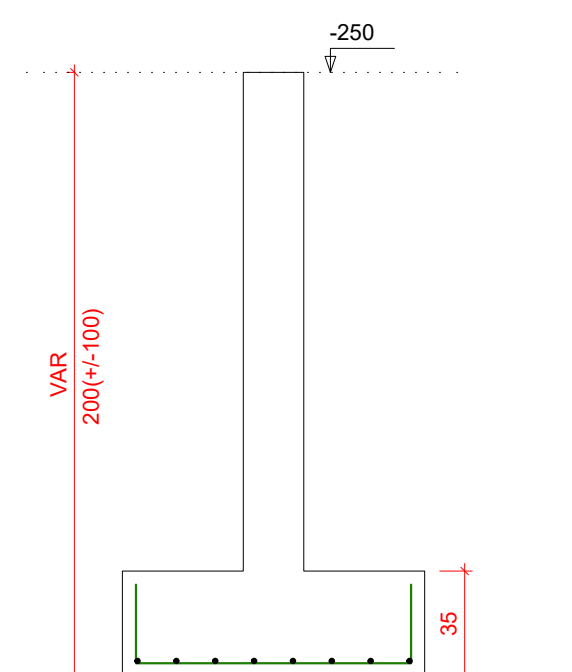
CORTE  
ESC 1:25



S52=S53  
PLANTA  
ESC 1:25



CORTE  
ESC 1:25



RELAÇÃO DO AÇO

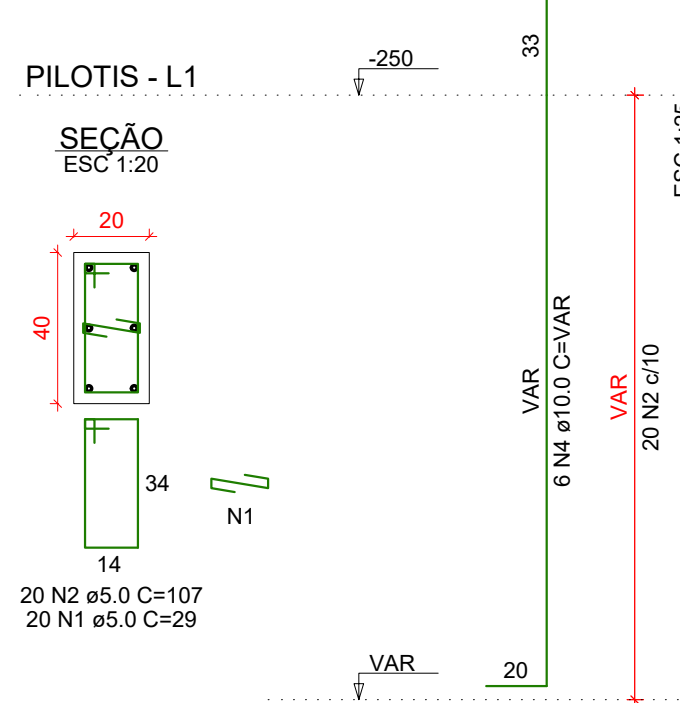
AÇO	N	DIAM (mm)	QUANT	C.UNIT (cm)	C.TOTAL (cm)
CA50	1	10.0	27	133	3591
	2	10.0	41	153	6273
	3	10.0	44	133	5852
	4	10.0	32	153	4896
	5	10.0	12	178	2136
	6	10.0	10	198	1980
	7	10.0	22	163	3586
	8	10.0	20	183	3660
	9	10.0	18	168	3024
	10	10.0	10	118	1180
	11	10.0	7	136	966
	12	10.0	18	138	2484
	13	10.0	16	158	2528

RESUMO DO AÇO

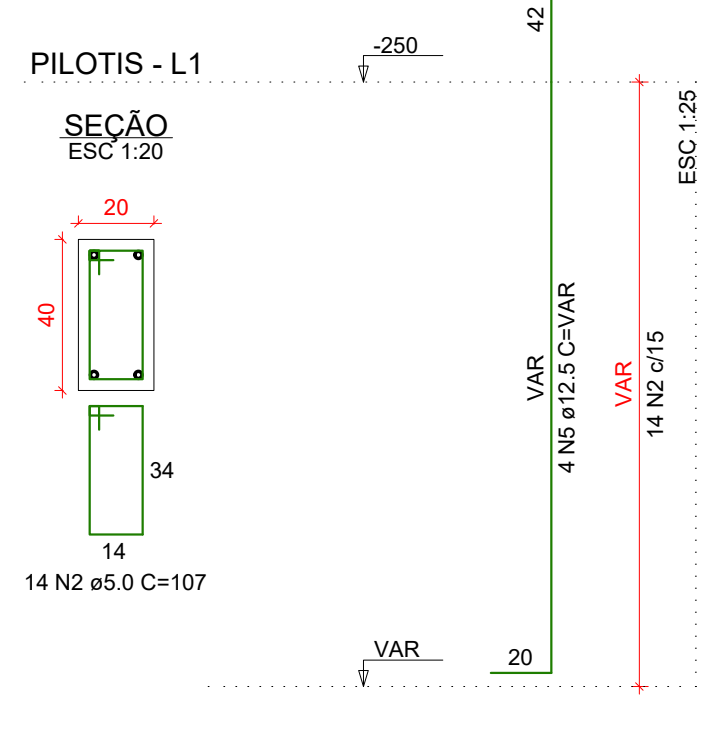
AÇO	DIAM (mm)	C.TOTAL (m)	PESO + 0% (kg)
CA50	10.0	421.6	259.9
<b>PESO TOTAL (kg)</b>			<b>259.9</b>

Volume de concreto (C-30) = 7.73 m³  
 Área de forma = 22.22 m²  
 Solo com capacidade de suporte > 3.00 kgf/cm²  
 Solo compactado sobre a sapata  
 peso especifico > 1600.00 kgf/m³

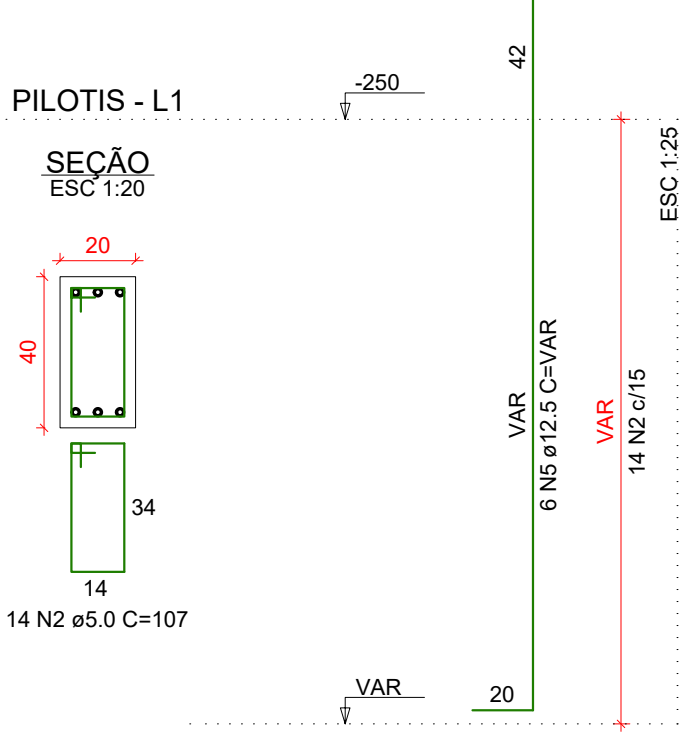
P18=P19=P20=P23=P33=P41=  
=P43=P51=P53



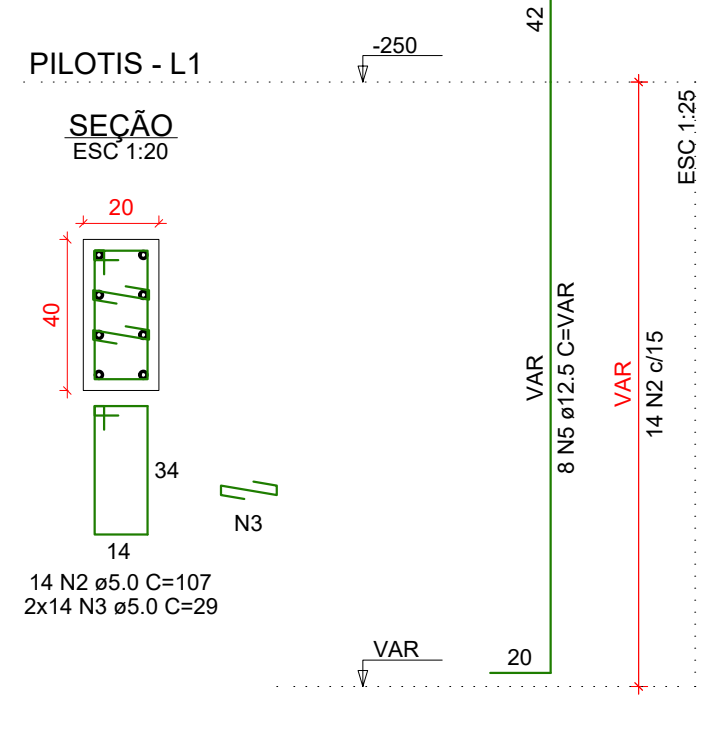
P21



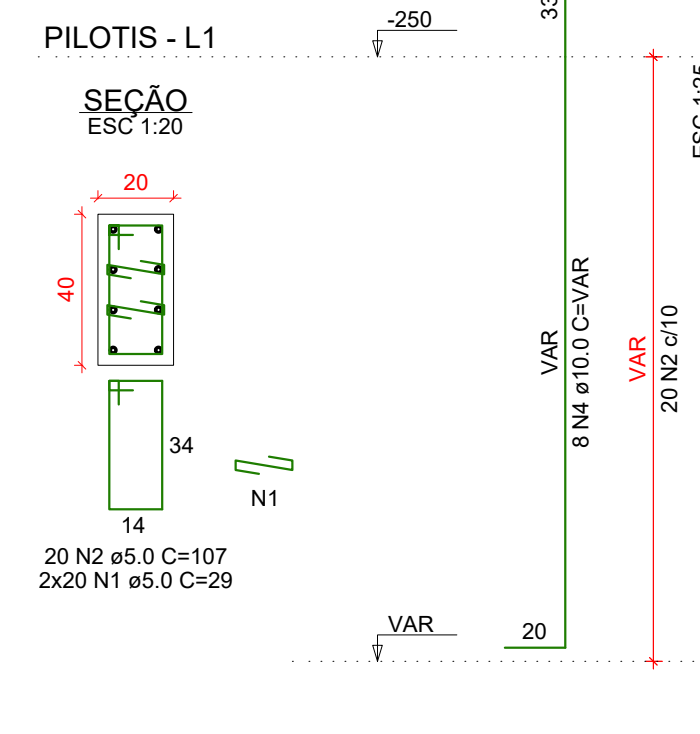
P22=P32=P42



P31



P52



RELAÇÃO DO AÇO

AÇO	N	DIAM (mm)	QUANT	C.UNIT (cm)	C.TOTAL (cm)
CA60	1	5.0	220	29	6380
	2	5.0	270	107	28890
	3	5.0	28	29	812
CA50	4	10.0	62	VAR	VAR
	5	12.5	30	VAR	VAR

RESUMO DO AÇO

AÇO	DIAM (mm)	C.TOTAL (m)	PESO + 0% (kg)
CA50	10.0	153.1	94.4
CA60	5.0	76.5	73.7
		360.8	55.6
<b>PESO TOTAL (kg)</b>			<b>168.1</b>
CA50			168.1
CA60			55.6

Volume de concreto (C-30) = 2.40 m³  
 Área de forma = 36.00 m²

Aprovações:



Rua Roberto Trompowski, 68 - 2º andar / Tel: 49 3522-2800 - www.ammoc.org.br - e-mail: ammoc@ammoc.org.br - Joaçaba/SC

**PREFEITURA MUNICIPAL DE TREZE TÍLIAS**

Obra:

**2ª ETAPA - ESCOLA MUNICIPAL IRMÃ FILOMENA**

Local da Obra:

RUA DR. IVO D'AQUINO - CENTRO - TREZE TÍLIAS / SC

Conteúdo:

DETALHAMENTO DAS SAPATAS E PILARETES DO PILOTIS

Responsável Técnico:  
 Ana Júlia U. de Carvalho - Eng. Civil - Crea/SC 105.295-8  
 André Brito Dotti - Eng. Civil - Crea/SC 162.237-5  
 Denir Narcizo Zulian - Eng. Civil - Crea/SC 50.805-7  
 Fábio Zilio Caron - Eng. Civil - Crea/SC 140.642-7  
 Lucas F. Balestrin - Eng. Agrônomo - Crea/SC 156.743-7  
 Max Mooshammer - Eng. Civil - Crea/SC 139.164-0  
 Suelten Karine Cervelin - Eng. Civil - Crea/SC 166.933-0

**EST  
03/21**

Quaisquer alterações consulte os responsáveis técnicos:

Assinatura Responsável Técnico: \_\_\_\_\_ Assinatura Prefeito(a) Municipal: \_\_\_\_\_

Desenho: Fábio Z. Caron      Data: Junho / 2021      Escala: Indicada (s)      Área Total: 810,03 m²

**ESTRUTURAL**