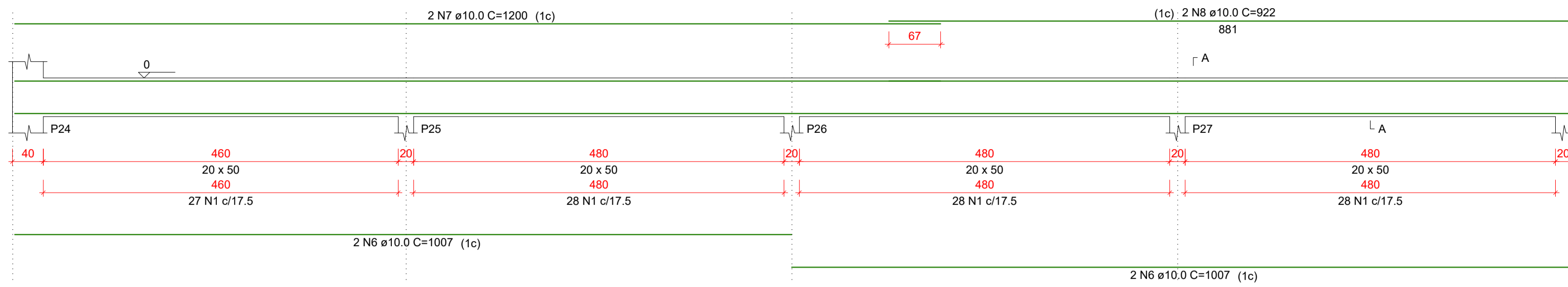
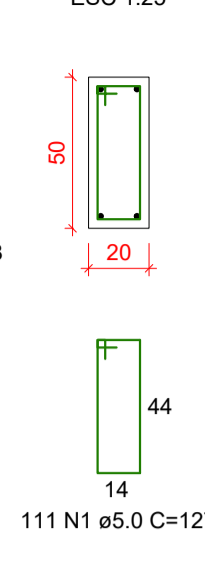


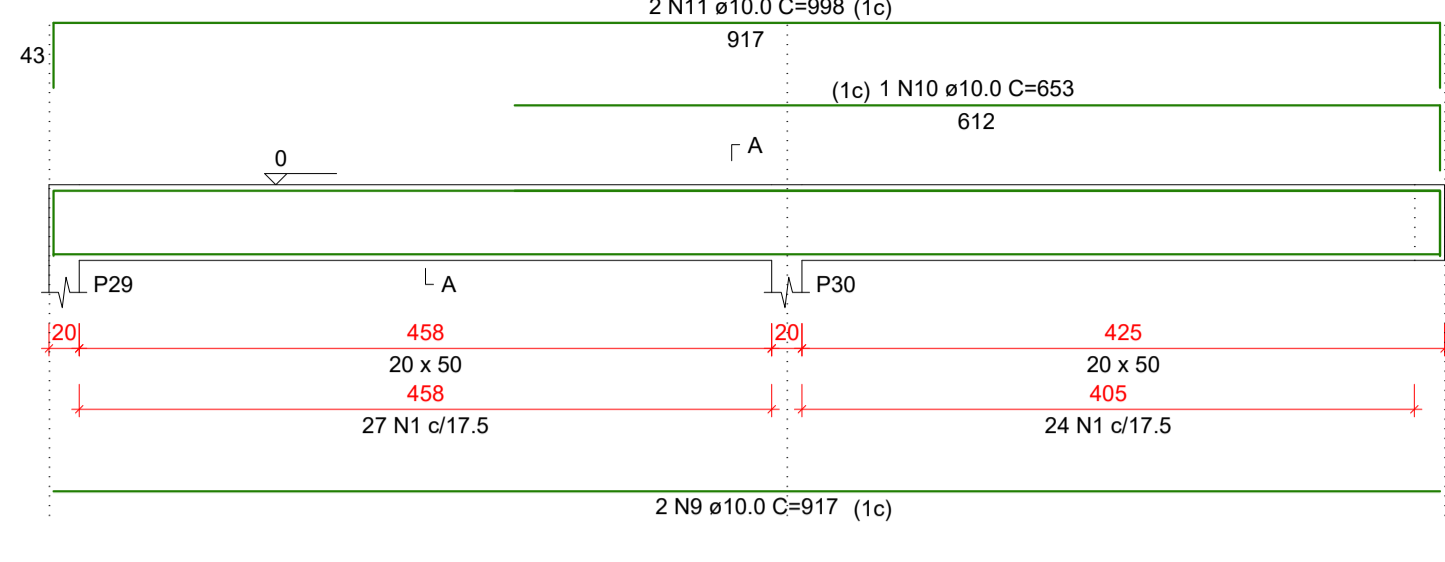
V7
ESC 1:50



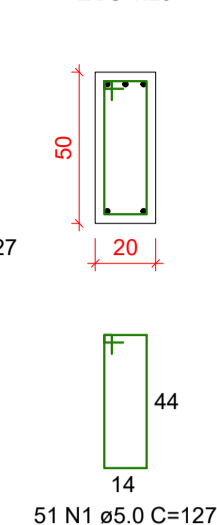
SEÇÃO A-A
ESC 1:25



V8
ESC 1:50



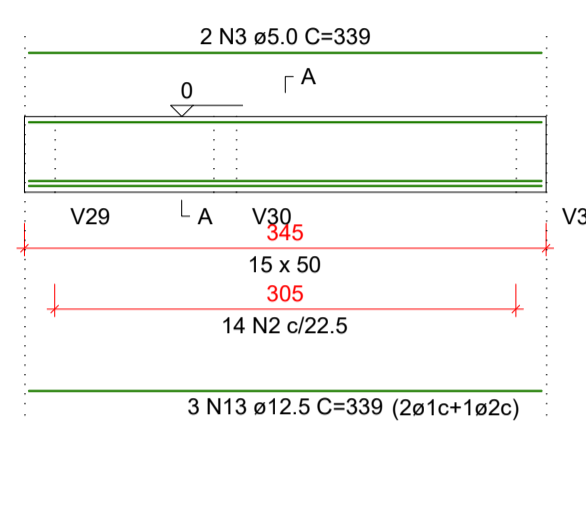
SEÇÃO A-A
ESC 1:25



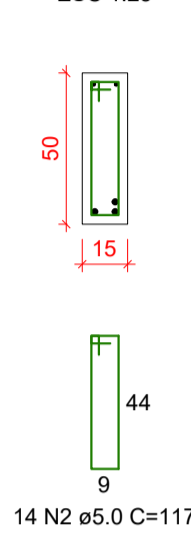
RELAÇÃO DO AÇO

AÇO	N	DIAM (mm)	QUANT	C.UNIT (cm)	C.TOTAL (cm)
CA60	1	5.0	563	127	71501
	2	5.0	23	117	2691
	3	5.0	4	339	1356
	4	5.0	2	214	428
	5	5.0	47	117	5498
CA50	6	10.0	8	1007	8056
	7	10.0	4	1200	4800
	8	10.0	4	922	3688
	9	10.0	4	917	3668
	10	10.0	2	653	1306
	11	10.0	4	998	3992
	12	10.0	2	214	428
	13	12.5	5	339	1695
	14	12.5	2	542	1084
	15	12.5	2	1078	2156
	16	12.5	1	265	265
	17	12.5	2	1066	2132
	18	12.5	4	1010	4040
	19	12.5	2	330	660
	20	12.5	2	1197	2394
	21	12.5	2	973	1946
	22	16.0	1	551	551
	23	16.0	2	940	1880
	24	16.0	1	246	246
	25	16.0	2	933	1866
	26	20.0	3	484	1452
	27	20.0	1	240	240
	28	20.0	2	549	1098

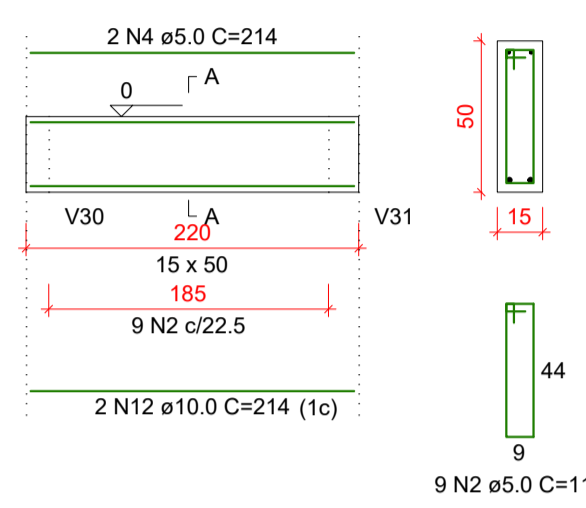
V9
ESC 1:50



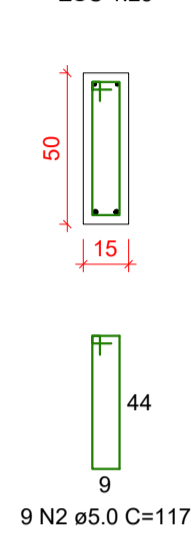
SEÇÃO A-A
ESC 1:25



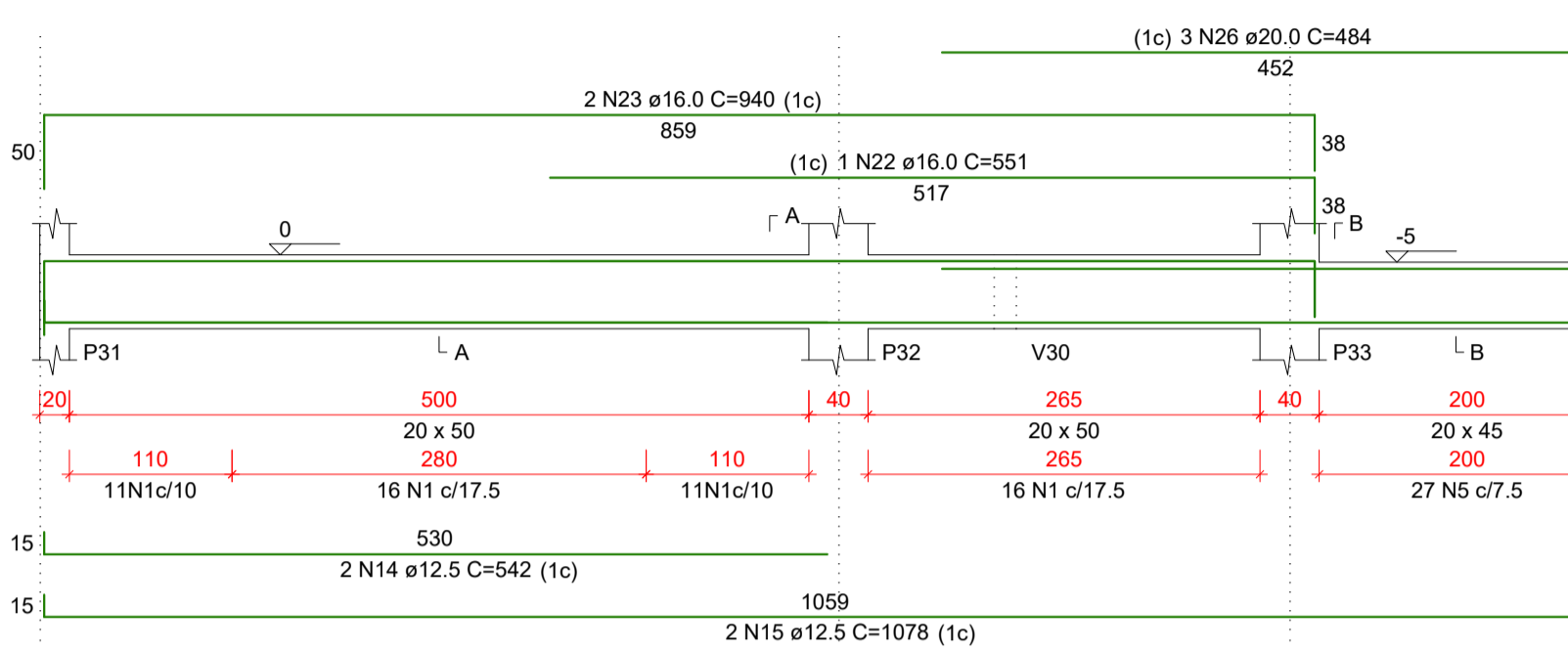
V10
ESC 1:50



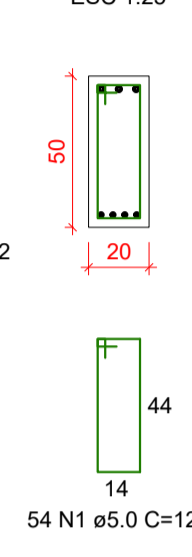
SEÇÃO A-A
ESC 1:25



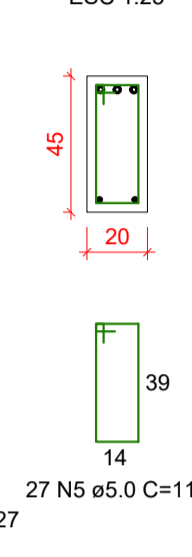
V11
ESC 1:50



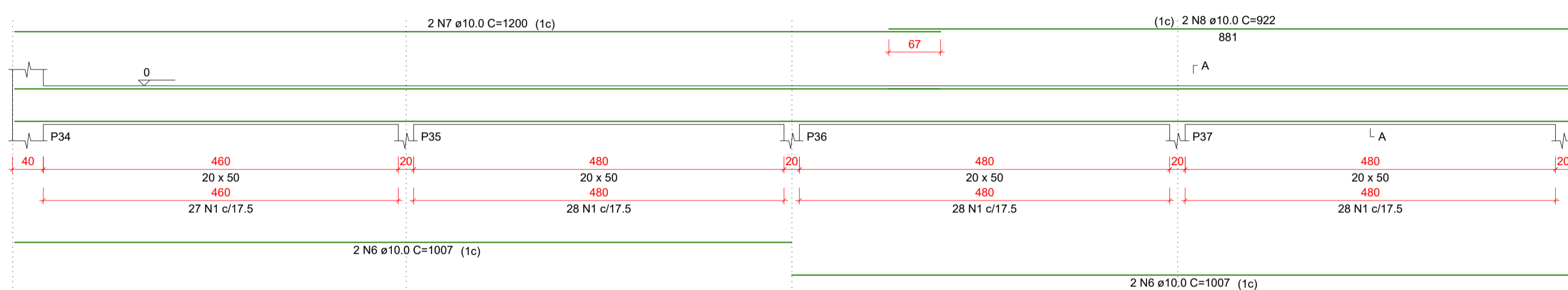
SEÇÃO A-A
ESC 1:25



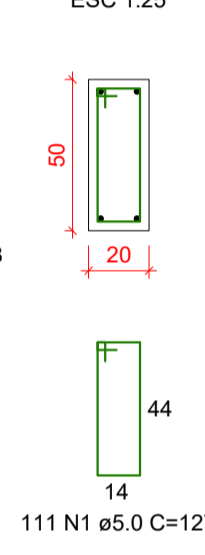
SEÇÃO B-B
ESC 1:25



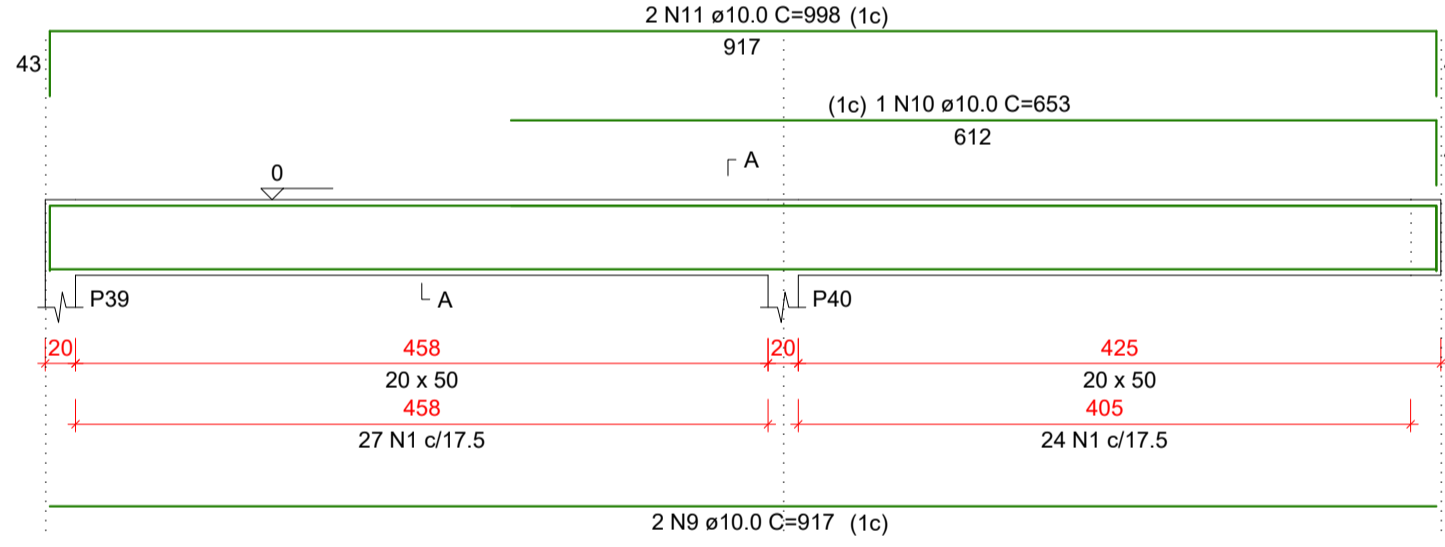
V12
ESC 1:50



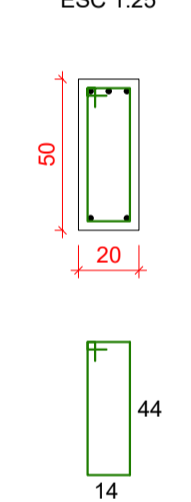
SEÇÃO A-A
ESC 1:25



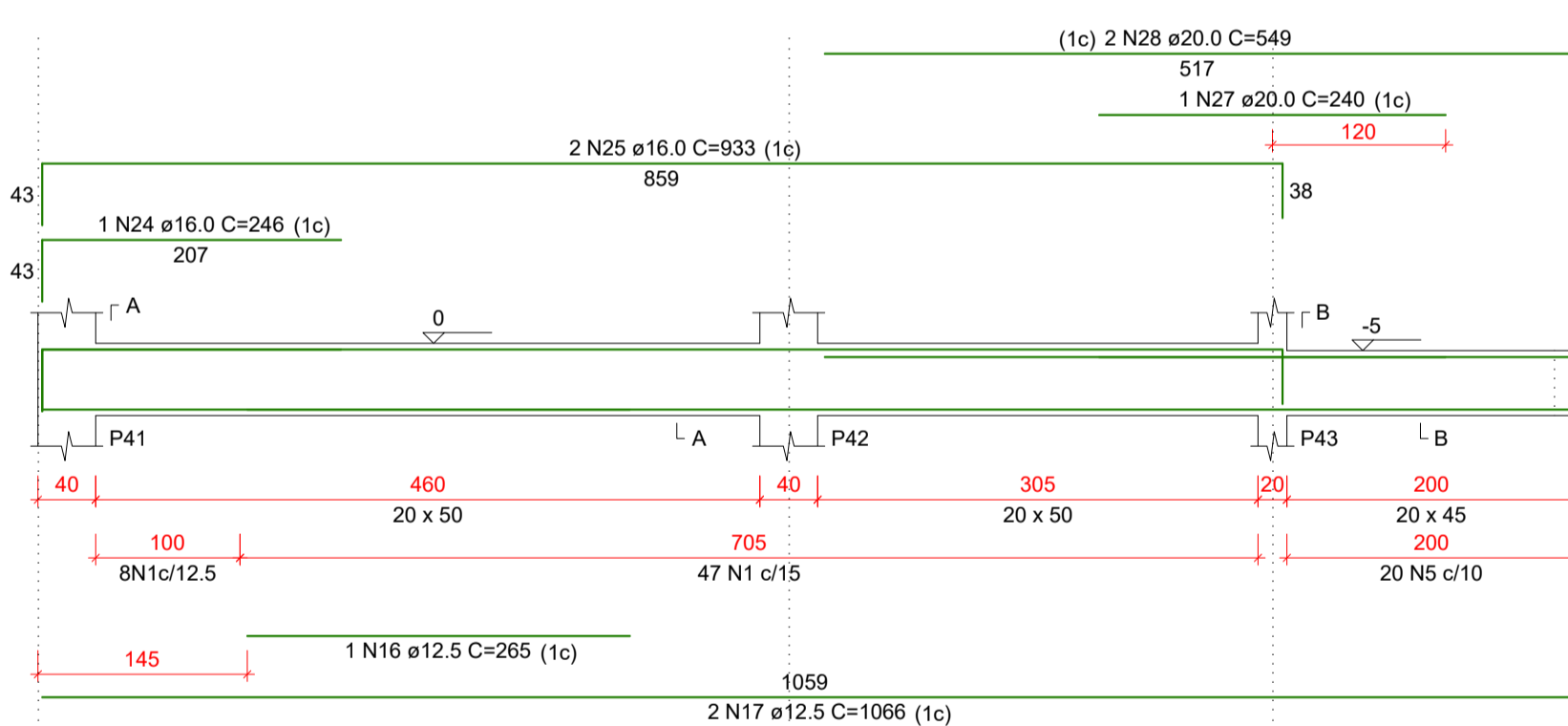
V13
ESC 1:50



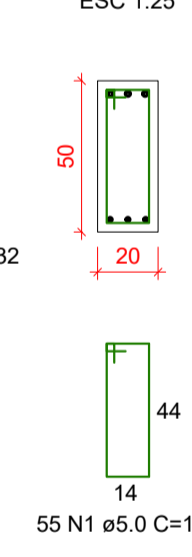
SEÇÃO A-A
ESC 1:25



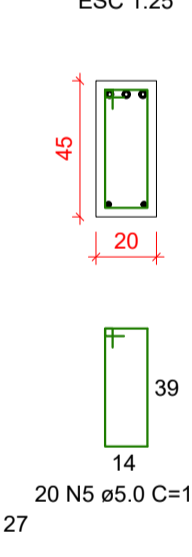
V14
ESC 1:50



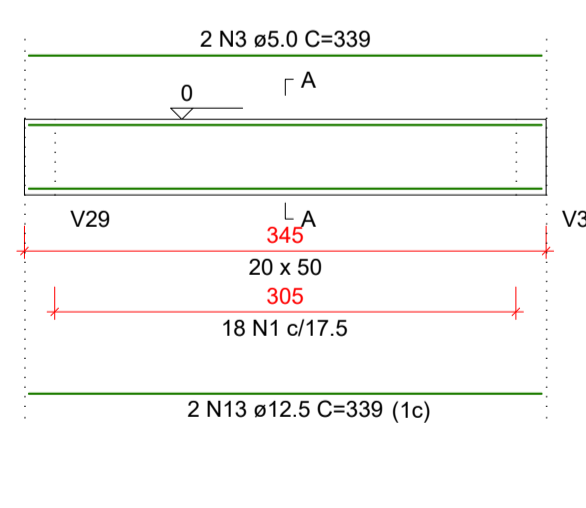
SEÇÃO A-A
ESC 1:25



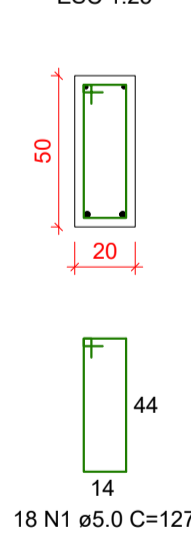
SEÇÃO B-B
ESC 1:25



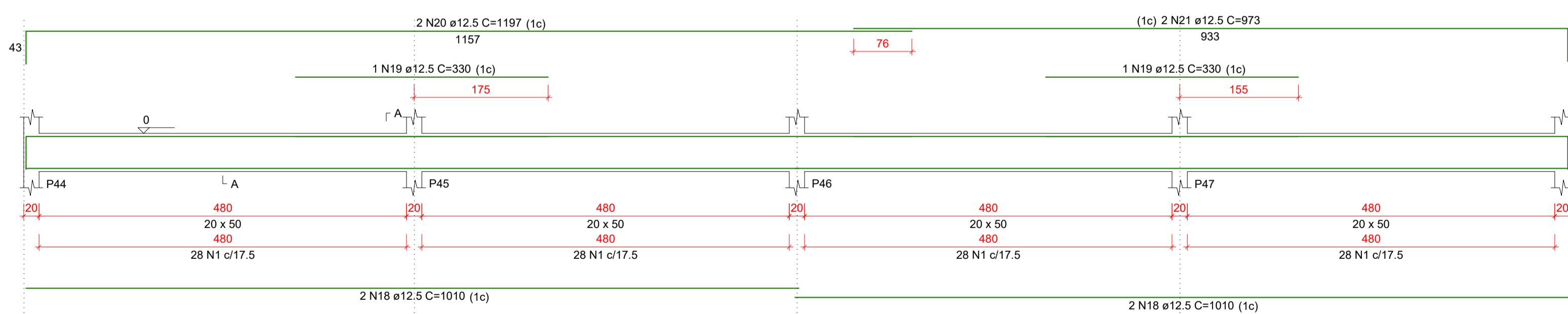
V15
ESC 1:50



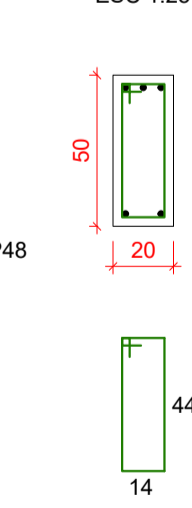
SEÇÃO A-A
ESC 1:25



V16
ESC 1:50



SEÇÃO A-A
ESC 1:25



Aprovações:



Rua Roberto Trompowski, 68 - 2º andar / Tel: 49 3522-2800 - www.ammoc.org.br - e-mail: ammoc@ammoc.org.br - Joaçaba/SC

PREFEITURA MUNICIPAL DE TREZE TÍLIAS

Obra: **2ª ETAPA - ESCOLA MUNICIPAL IRMÃ FILOMENA**

Local da Obra: **RUA DR. IVO DAQUINO - CENTRO - TREZE TÍLIAS / SC**

Conteúdo: **DETALHAMENTO DAS VIGAS DO PISO 02-05**

Responsável Técnico:
 Ana Júlia U. de Carvalho - Eng. Civil - Crea/SC 105.295-8
 André Brito Dotti - Eng. Civil - Crea/SC 162.237-5
 Denir Narcizo Zulian - Eng. Civil - Crea/SC 50.805-8
 Fábio Zilio Caron - Eng. Civil - Crea/SC 140.642-7
 Lucas F. Balestrin - Eng. Agrônomo - Crea/SC 156.743-7
 Max Mooshammer - Eng. Civil - Crea/SC 139.164-0
 Suellen Karine Cervelin - Eng. Civil - Crea/SC 166.933-0

**EST
09/21**

Quaisquer alterações consulte os responsáveis técnicos:

Assinatura Responsável Técnico: _____ Assinatura Prefeito(a) Municipal: _____

Desenho: **Fábio Z. Caron** Data: **Junho / 2021** Escala: **Indicada (s)** Área Total: **810,03 m²**

ESTRUTURAL