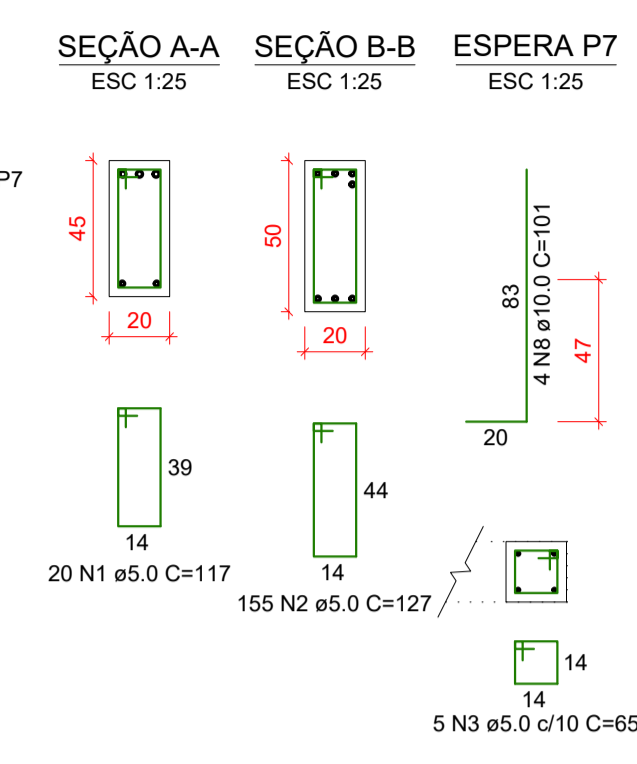
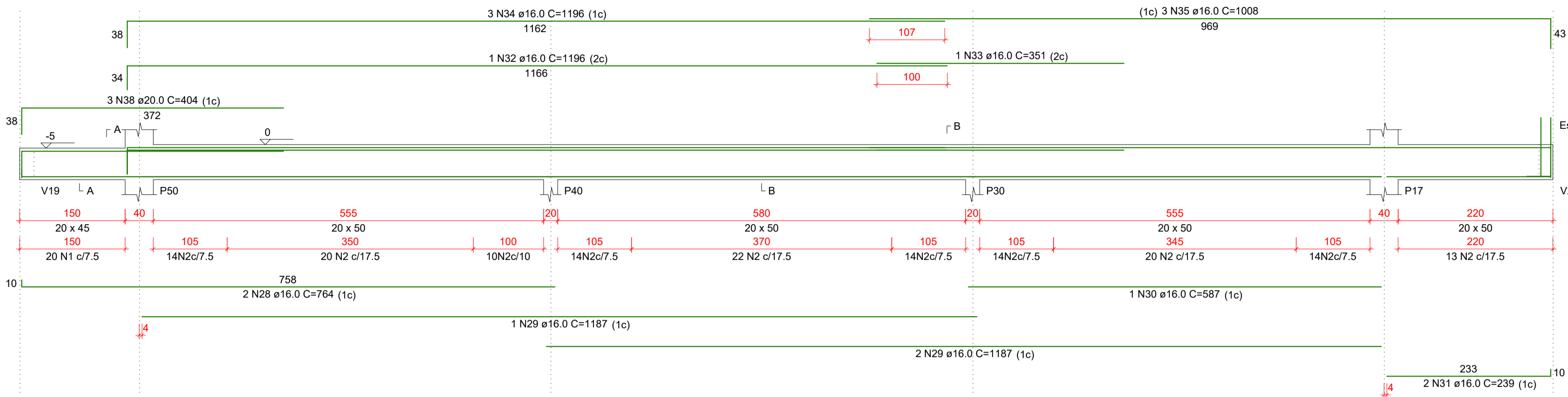
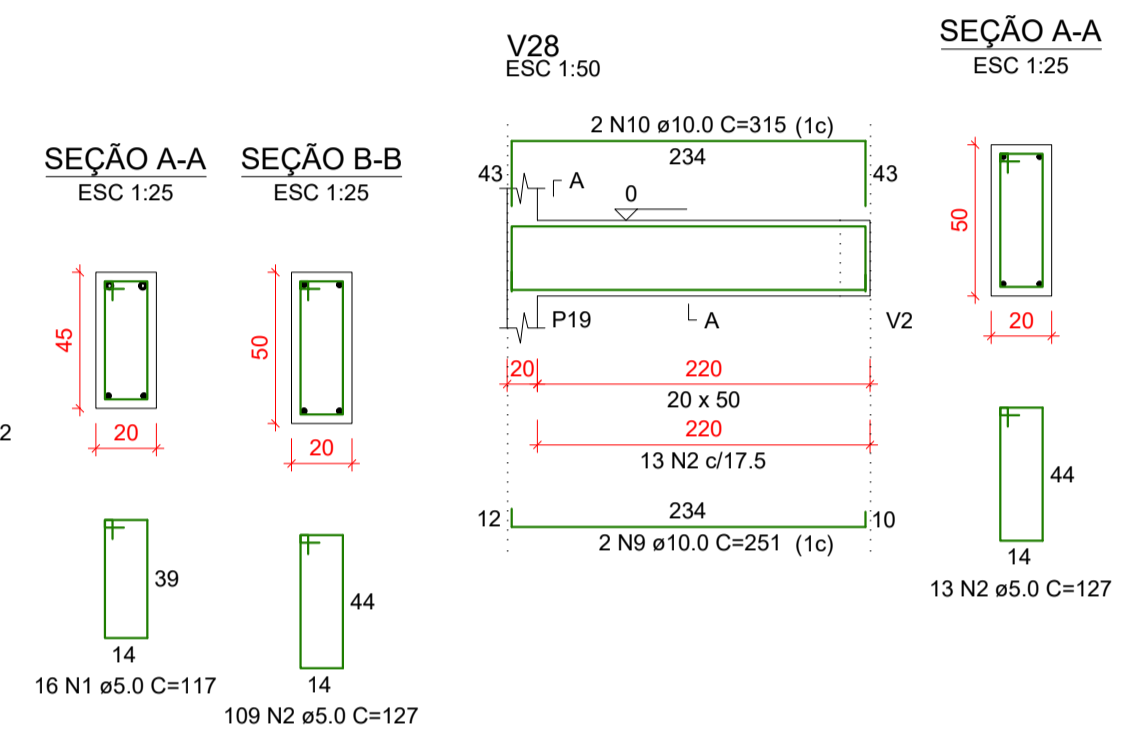
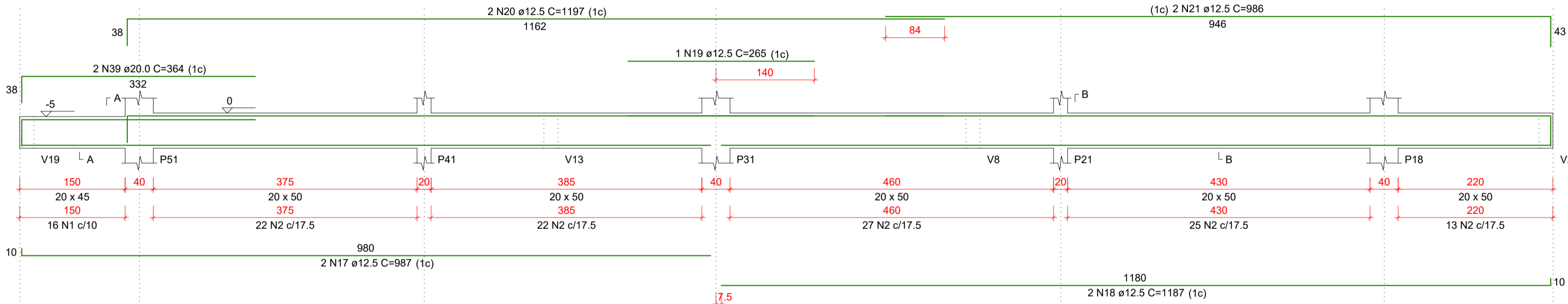


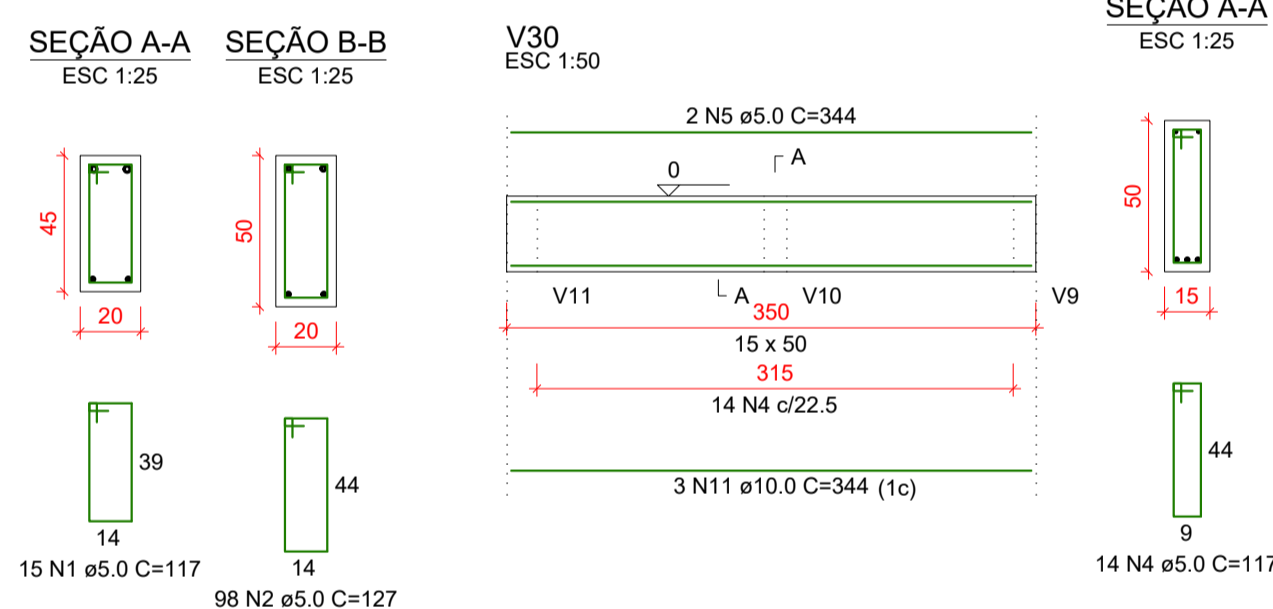
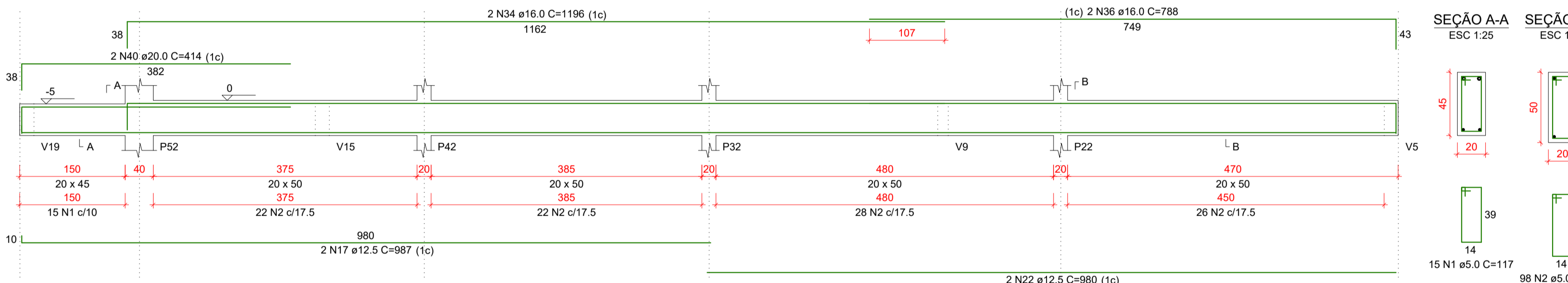
V26
ESC 1:50



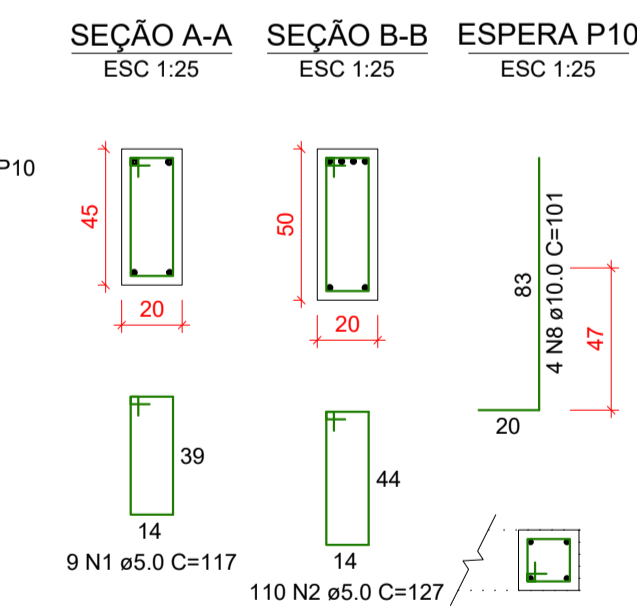
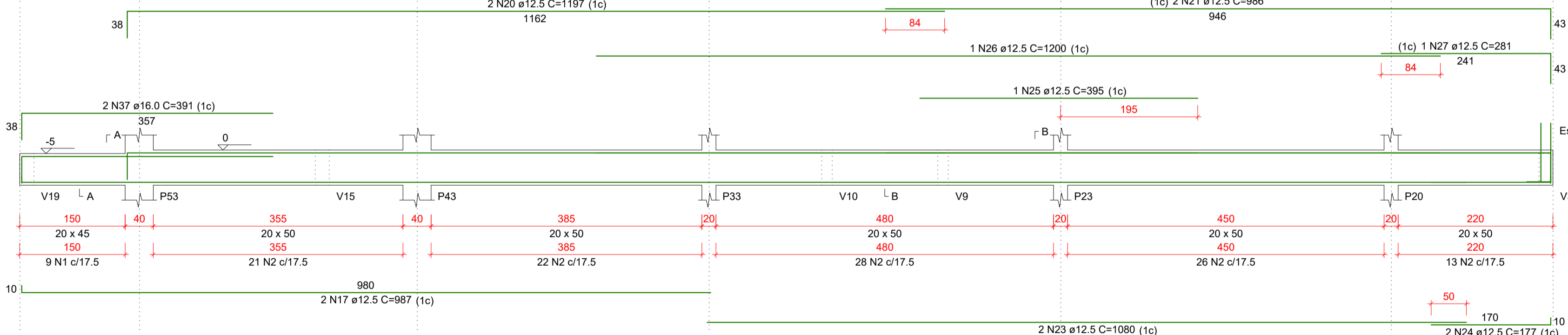
V27
ESC 1:50



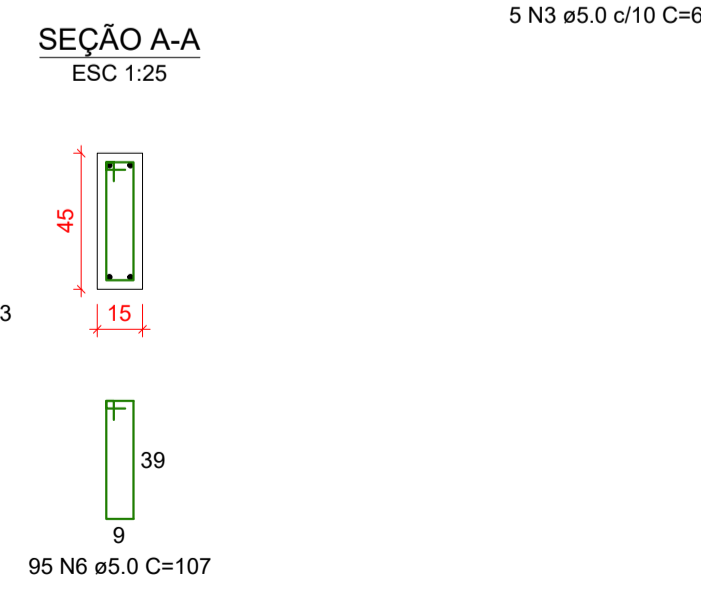
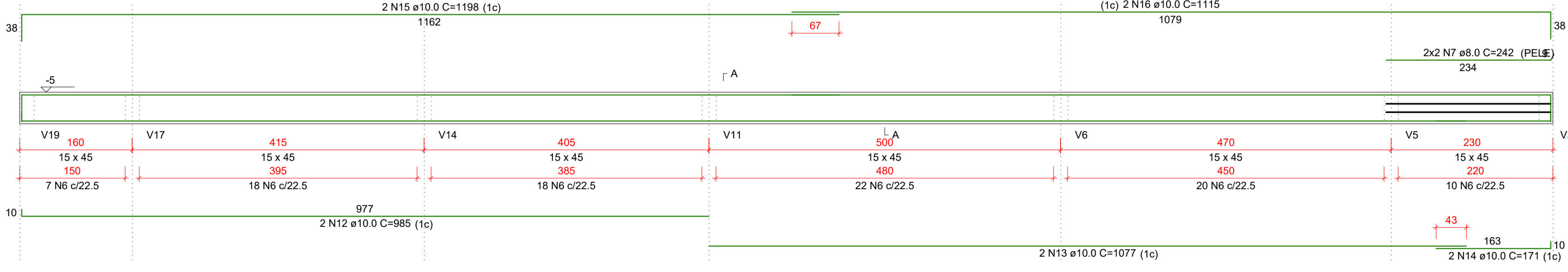
V29
ESC 1:50



V31
ESC 1:50



V32
ESC 1:50



RELAÇÃO DO AÇO

ACO	N	DIAM (mm)	QUANT	C.UNIT (cm)	C.TOTAL (cm)
CA60	1	5.0	60	117	7020
CA60	2	5.0	485	127	61595
CA60	3	5.0	10	65	650
CA60	4	5.0	14	117	1638
CA60	5	5.0	2	344	688
CA60	6	5.0	95	107	10165
CA60	7	8.0	4	242	968
CA60	8	10.0	8	101	808
CA60	9	10.0	2	251	502
CA60	10	10.0	2	315	630
CA60	11	10.0	3	344	1032
CA60	12	10.0	2	985	1970
CA60	13	10.0	2	1077	2154
CA60	14	10.0	2	171	342
CA60	15	10.0	2	1198	2396
CA60	16	10.0	2	1115	2230
CA60	17	12.5	6	987	5922
CA60	18	12.5	2	1187	2374
CA60	19	12.5	1	295	295
CA60	20	12.5	4	1197	4788
CA60	21	12.5	4	986	3944
CA60	22	12.5	2	980	1960
CA60	23	12.5	2	1080	2160
CA60	24	12.5	2	177	354
CA60	25	12.5	1	395	395
CA60	26	12.5	1	1200	1200
CA60	27	12.5	1	281	281
CA60	28	16.0	2	784	1568
CA60	29	16.0	3	1187	3561
CA60	30	16.0	1	587	587
CA60	31	16.0	2	239	478
CA60	32	16.0	1	1196	1196
CA60	33	16.0	1	351	351
CA60	34	16.0	5	1196	5980
CA60	35	16.0	3	1008	3024
CA60	36	16.0	2	798	1596
CA60	37	16.0	2	391	782
CA60	38	20.0	3	404	1212
CA60	39	20.0	2	364	728
CA60	40	20.0	2	414	828

RESUMO DO AÇO

ACO	DIAM (mm)	C.TOTAL (m)	PESO + 0% (kg)
CA50	8.0	9.7	3.8
CA50	10.0	120.6	74.4
CA50	12.5	236.4	227.8
CA50	16.0	190.6	300.9
CA50	20.0	27.7	68.3
CA50	5.0	817.6	126
PESO TOTAL (kg)			
CA50		675.1	
CA60		126	

Volume de concreto (C-30) = 10.41 m³
Área de forma = 131.12 m²



Aprovações:

Rua Roberto Trompowski, 68 - 2º andar / Tel: 49 3522-2800 - www.ammoc.org.br - e-mail: ammoc@ammoc.org.br - Joaçaba/SC

PREFEITURA MUNICIPAL DE TREZE TÍLIAS

Obra: **2ª ETAPA - ESCOLA MUNICIPAL IRMÃ FILOMENA**

Local da Obra: **RUA DR. IVO DAQUINO - CENTRO - TREZE TÍLIAS / SC**
Conteúdo: **DETALHAMENTO DAS VIGAS DO PISO 05-05**

Responsável Técnico:
Ana Júlia U. de Carvalho - Eng. Civil - Crea/SC 105.295-8
André Brito Dotti - Eng. Civil - Crea/SC 162.237-5
Denir Narcizo Zulian - Eng. Civil - Crea/SC 50.805-8
Fábio Zilio Caron - Eng. Civil - Crea/SC 140.642-7
Lucas F. Balestrin - Eng. Agrônomo - Crea/SC 156.743-7
Max Mooshammer - Eng. Civil - Crea/SC 139.164-0
Suellen Karine Cervelin - Eng. Civil - Crea/SC 166.933-0

EST 12/21

Qualquer alterações consulte os responsáveis técnicos:

Assinatura Responsável Técnico: _____ Assinatura Prefeito(a) Municipal: _____

Desenho: **Fábio Z. Caron** Data: **Junho / 2021** Escala: **Indicada (s)** Área Total: **810,03 m²**

ESTRUTURAL